

Active Recombinant Full Length Human FUBP1 Protein

Cat. No. FUBP1-166HFL Lot. No. (See product label)

SPECIFICATION

Product Overview Recombinant Full Length Human FUBP1 Protein, fused to Flag-tag at C-terminus, was expressed in Mammalian cells.

Species Human

Source Mammalian Cells

ProteinLength 1-644 a.a.

Description

The protein encoded by this gene is a single stranded DNA-binding protein that binds to multiple DNA elements, including the far upstream element (FUSE) located upstream of c-myc. Binding to FUSE occurs on the non-coding strand, and is important to the regulation of c-myc in undifferentiated cells. This protein contains three domains, an amphipathic helix N-terminal domain, a DNA-binding central domain, and a C-terminal transactivation domain that contains three tyrosine-rich motifs. The N-terminal domain is thought to repress the activity of the C-terminal domain. This protein is also thought to bind RNA, and contains 3'-5' helicase activity with in vitro activity on both DNA-DNA and RNA-RNA duplexes. Aberrant expression of this gene has been found in malignant tissues, and this gene is important to neural system and lung development. Binding of this protein to viral RNA is thought to play a role in several viral diseases, including hepatitis C and hand, foot and mouth disease. Alternative splicing results in multiple transcript variants.

Form 25 mM Tris HCl, pH 7.3, 100 mM glycine, 10% glycerol.

 Tel: 1-631-559-9269 1-516-512-3133

 Email: info@creative-biomart.com  Fax: 1-631-938-8127

 45-1 Ramsey Road, Shirley, NY 11967, USA

Bio-activity	EMSA assay
Molecular Mass	67.4 kDa
AA Sequence	<p>MADYSTVPPPSSGSAGGGGGGGGGGGVNDAFKDALQRRARQIAAKIGGDAGTSLNS NDYGYGGQKRPLEDG DQPDAAKQVAPQNSFGTQLPPMHQQSRSVMTEEYKVP DGMVGFIIIRGGGEQISRIQQESGCKIQIAPDS GGLPERSCLMTGTPEVQSAKRLLD QIVEKGRPAPGFHHGDGPGNAVQEIMIPASKAGLVIGKGGETIKQ LQERAGVKMVM QDGPQNTGADKPLRITGDPYKVQQAQEMVLELIRDQGGFREVNEYGSRIGGNEGI DV PIPRFAVGIVIGRNGEMIKKIQNDAGVRIQFKPDDGTTPERIAQITGPPDRCQHAA EIITDLLRSVQAGN PGGPGPGGRGRGRGQGNWNMGPPGGLQEFNFIVPTGKTGLII GKGGETIKSISQQSGARIELQRNPPNA DPNMKLFTIRGTPQQIDYARQLIEEKIGGP VNPLGPPVPHGPHGVPVPHGPPGPPGPGTGMGPYNPAPYN PGPPGPAPHGPPAP YAPQGWGNAYPHWQQQAPPDPAKAGTDPNSAAWAAYYAHYYQQQAQPPPAAPA GAP TTTQTNGQGDQQNPAPAGQVDYTKAWEEYKMGQAVPAPTGAPPGGQPD YSAAWAEYYRQQAAYYAQTS PQGMPQHPPAPQGQTRTRPLEQKLISEEDLAANDILDYKDDDDKV</p>
Purity	> 80% as determined by SDS-PAGE and Coomassie blue staining.
Stability	Stable for 12 months from the date of receipt of the product under proper storage and handling conditions. Avoid repeated freeze-thaw cycles.
Storage	Store at -80 centigrade.
Concentration	>50 ug/mL as determined by microplate BCA method.
Preparation	Recombinant protein was captured through anti-DDK affinity column followed by conventional chromatography steps.

 Tel: 1-631-559-9269 1-516-512-3133

 Email: info@creative-biomart.com  Fax: 1-631-938-8127

 45-1 Ramsey Road, Shirley, NY 11967, USA

Protein Families Stem cell - Pluripotency, Transcription Factors

Full Length Full L.

GENE INFORMATION

Gene Name FUBP1 far upstream element binding protein 1 [Homo sapiens (human)]

Official Symbol FUBP1

Synonyms FBP; FUBP; hDH V

Gene ID 8880

mRNA Refseq NM_003902.5

Protein Refseq NP_003893.2

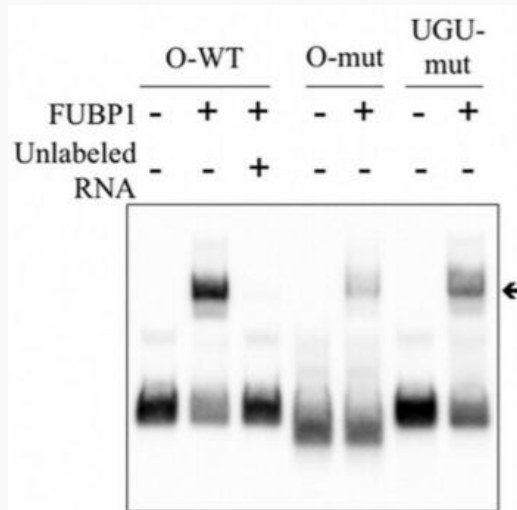
MIM 603444

UniProt ID Q96AE4


 Tel: 1-631-559-9269 1-516-512-3133

 Email: info@creative-biomart.com  Fax: 1-631-938-8127


 45-1 Ramsey Road, Shirley, NY 11967, USA

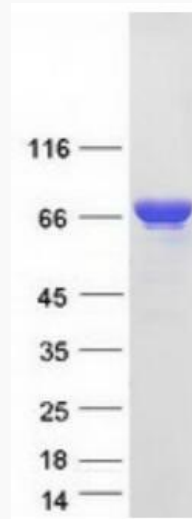


FUBP1 binds to the wild-type (wt) RNA probe that contains site O. The O-WT or mutated (O-mut, UGU-mut) biotinylated RNA probes (20 fmol) were incubated for 30 min at room temperature with 200 nM of recombinant FUBP1 protein and resolved on a 5% native polyacrylamide gel. The arrow indicates bandshifted complexes. For the competition assay, an excess of unlabeled O-WT RNA probe (200 pmol) was added.


 Tel: 1-631-559-9269 1-516-512-3133

 Email: info@creative-biomart.com  Fax: 1-631-938-8127

 45-1 Ramsey Road, Shirley, NY 11967, USA



Coomassie blue staining of purified FUBP1 protein.

 Tel: 1-631-559-9269 1-516-512-3133

 Email: info@creative-biomart.com  Fax: 1-631-938-8127

 45-1 Ramsey Road, Shirley, NY 11967, USA