

## Recombinant Human FUNDC1 Protein, GST-tagged

**Cat. No.** FUNDC1-4549H    **Lot. No.** (See product label)

### SPECIFICATION

<b>Product Overview</b>	Human FUNDC1 full-length ORF ( NP_776155.1, 1 a.a. - 155 a.a.) recombinant protein with GST-tag at N-terminal.
<b>Species</b>	Human
<b>Source</b>	Wheat Germ
<b>Description</b>	This gene encodes a protein with a FUN14 superfamily domain. The function of the encoded protein is not known. [provided by RefSeq, Sep 2011]
<b>Molecular Mass</b>	43.6 kDa
<b>AA Sequence</b>	MATRNPPPQDYESDDDSYEVLDLTEYARRHQWWNRVFGHSSGPMVEKYSVATQIV MGGVTGWCAGFLFQKVGKLAATAVGGGFLLLQIASHSGYVQIDWKRVEKDVNKAK RQIKKRANKAAPEINNLIEEATEFIKQNISSGFVGGFLLGLAS
<b>Applications</b>	Enzyme-linked Immunoabsorbent Assay Western Blot (Recombinant protein) Antibody Production Protein Array
<b>Notes</b>	Best use within three months from the date of receipt of this protein.
<b>Storage</b>	Store at -80 centigrade. Aliquot to avoid repeated freezing and thawing.

 Tel: 1-631-559-9269    1-516-512-3133

 Email: [info@creative-biomart.com](mailto:info@creative-biomart.com)     Fax: 1-631-938-8127

 45-1 Ramsey Road, Shirley, NY 11967, USA

**Storage Buffer** 50 mM Tris-HCl, 10 mM reduced Glutathione, pH=8.0 in the elution buffer.

## GENE INFORMATION

**Gene Name** FUNDC1 FUN14 domain containing 1 [ Homo sapiens ]

**Official Symbol** FUNDC1

**Synonyms** FUNDC1; FUN14 domain containing 1; FUN14 domain-containing protein 1; MGC51029;

**Gene ID** 139341

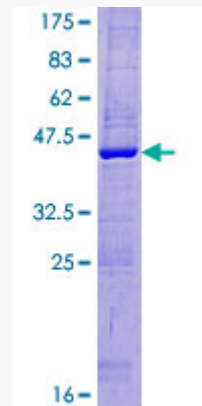
**mRNA Refseq** NM\_173794


**Protein Refseq** NP\_776155

**MIM** 300871

**UniProt ID** Q8IVP5

**Quality Control Testing**



 Tel: 1-631-559-9269 1-516-512-3133

 Email: [info@creative-biomart.com](mailto:info@creative-biomart.com)  Fax: 1-631-938-8127

 45-1 Ramsey Road, Shirley, NY 11967, USA



12.5% SDS-PAGE Stained with Coomassie Blue.

 Tel: 1-631-559-9269 1-516-512-3133

 Email: [info@creative-biomart.com](mailto:info@creative-biomart.com)  Fax: 1-631-938-8127

 45-1 Ramsey Road, Shirley, NY 11967, USA