

Recombinant Human FURIN Protein (AA 27-715), C-GFP/His-Tagged

Cat. No. FURIN-30H Lot. No. (See product label)

SPECIFICATION

Product Overview

Recombinant Human FURIN Protein (AA 27-715) with C-GFP/His tag was expressed in HEK293.

Species

Human

Source

HEK293

ProteinLength

AA 27-715

Description

This gene encodes a member of the subtilisin-like proprotein convertase family, which includes proteases that process protein and peptide precursors trafficking through regulated or constitutive branches of the secretory pathway. It encodes a type 1 membrane bound protease that is expressed in many tissues, including neuroendocrine, liver, gut, and brain. The encoded protein undergoes an initial autocatalytic processing event in the ER and then sorts to the trans-Golgi network through endosomes where a second autocatalytic event takes place and the catalytic activity is acquired. Like other members of this convertase family, the product of this gene specifically cleaves substrates at single or paired basic residues. Some of its substrates include parathyroid hormone, transforming growth factor beta 1 precursor, proalbumin, pro-beta-secretase, membrane type-1 matrix metalloproteinase, beta subunit of pro-nerve growth factor and von Willebrand factor. It is thought to be one of the proteases responsible for the activation of HIV envelope glycoproteins gp160 and gp140, and may play a role in tumor progression. Unlike

 Tel: 1-631-559-9269 1-516-512-3133

 Email: info@creative-biomart.com  Fax: 1-631-938-8127

 45-1 Ramsey Road, Shirley, NY 11967, USA

SARS-CoV and other coronaviruses, the spike protein of SARS-CoV-2 is thought to be uniquely cleaved by this protease. Alternative splicing results in multiple transcript variants.

Form Liquid

AA Sequence

MQKVFTNTWAVRIPGGPAVANSVARKHGFLNLGQIFGDYYHFWHRGVTKRSLSPH
 RPRHSRLQREPQVQWLEQQVAKRRTKRVDVYQEPTDPKFPQQWYLSGVTQRDLNV
 KAAWAQGYTGHGIVVSILDDGIEKNHPDLAGNYDPGASFDVNDQDPDPQPRYTQM
 NDNRHGTRCAGEVAAVANNGVCGVGVAYNARIGGVRMLDGEVTDAVEARSLGLNP
 NHIHIYSASWGPEDDGKTVDGPARLAEEAFFRGVSQGRGGLGSIFVWASGNGGRE
 HDSCNCDGYTNSIYTLSSSATQFGNVPWYSEACSSTLATTYSSGNQNEKQIVTTDL
 RQKCTESHTGTSASAPLAAGIALTLEANKNLTWRDMQHLVVQTSKPAHLNANDWA
 TNGVGRKVSHSYGYGLLDAGAMVALAQNWTTVAPQRKCIIDILTEPKDIGKRLEVRK
 TVTACLGEPNHITRLEHAQARLTL SYNRRGDLAIHLVSPMGTRSTLLAARPHDYSAD
 GFNDWAFMTTHSWDEDPSGEWVLEIENTSEANNYGT LKFTLVLYGTAPEGLPVP
 ESSGCKTLTSSQACVCEEGFSLHQKSCVQHCPPGFAPQVLDTHYSTENDVETIRA
 SVCAPCHASCATCQGPALTDCLSCPSHASLDPVEQTCSRQSQSSRESPPQQQPPR
 LPPEVEAGQRLRAGLLPSHLPE

Purity > 85% as determined by SDS-PAGE

Storage Stored and shipped at -80 centigrade

Storage Buffer PBS, pH 7.4

GENE INFORMATION

Gene Name FURIN furin (paired basic amino acid cleaving enzyme) [Homo sapiens]

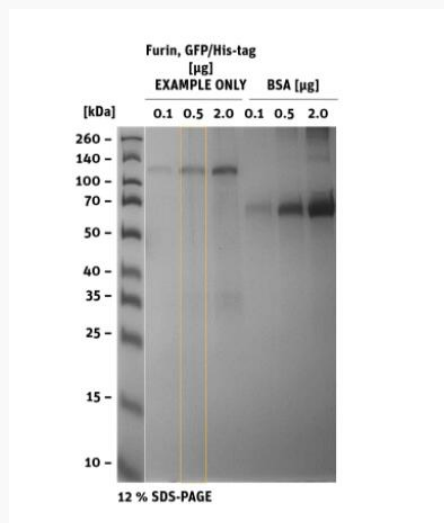
Official Symbol FURIN

 Tel: 1-631-559-9269 1-516-512-3133

 Email: info@creative-biomart.com  Fax: 1-631-938-8127

 45-1 Ramsey Road, Shirley, NY 11967, USA

Synonyms	FURIN; furin (paired basic amino acid cleaving enzyme); FUR, PACE, paired basic amino acid cleaving enzyme (furin, membrane associated receptor protein) , PCSK3; furin; SPC1; FES upstream region; dibasic processing enzyme; dibasic-processing enzyme; furin, membrane associated receptor protein; proprotein convertase subtilisin/kexin type 3; paired basic amino acid residue-cleaving enzyme; FUR; PACE; PCSK3
Gene ID	5045
mRNA Refseq	NM_002569
Protein Refseq	NP_002560
MIM	136950
UniProt ID	P09958

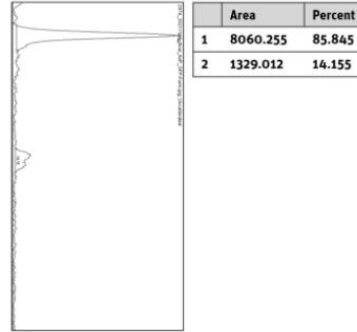
SDS-PAGE


Tel: 1-631-559-9269 1-516-512-3133

Email: info@creative-biomart.com Fax: 1-631-938-8127


45-1 Ramsey Road, Shirley, NY 11967, USA

**Histogram of marked
lane in gel picture**



 Tel: 1-631-559-9269 1-516-512-3133

 Email: info@creative-biomart.com  Fax: 1-631-938-8127

 45-1 Ramsey Road, Shirley, NY 11967, USA