

Recombinant Human Furin (Paired Basic Amino Acid Cleaving Enzyme)

Cat. No. FURIN-720H Lot. No. (See product label)

SPECIFICATION

| | |
|--------------------------------|---|
| Species | Human |
| Source | Sf9 Cells |
| Description | Furin is a protein that in humans is encoded by the FURIN gene. It was named furin because it was in the upstream region of an oncogene known as FES. The gene was known as FUR (FES Upstream Region) and therefore the protein was named furin. Furin is also known as PACE (Paired basic Amino acid Cleaving Enzyme). |
| Preparation Note | Isolated from Spodoptera frugiperda (Sf9) cells infected with recombinant baculovirus carrying truncated human furin. |
| Biochem/physiol Actions | Furin is a dibasic endoprotease that is localized in the Golgi apparatus. It is responsible for the proteolytic maturation of many precursor proteins in the secretory and endocytic pathways of mammalian cells. |
| Unit Definition | One unit is defined as the amount of Furin that will release 1 pmole of AMC from the fluorogenic peptide Boc-RVRR-AMC in 1 minute at 30 °C. |
| Physical Form | Solution in 10 mM MES, pH 7.0 at 25 °C, 1 mM CaCl ₂ , 50% glycerol. |
| Form | buffered aqueous solution. |
| Concentration | ≥2,000 unit/ML. |

 Tel: 1-631-559-9269 1-516-512-3133

 Email: info@creative-biomart.com  Fax: 1-631-938-8127

 45-1 Ramsey Road, Shirley, NY 11967, USA

Storage Temp -70°C.

GENE INFORMATION

Gene Name [FURIN furin \(paired basic amino acid cleaving enzyme\) \[Homo sapiens \]](#)

Synonyms FURIN; furin (paired basic amino acid cleaving enzyme); FUR; PACE; SPC1; PCSK3; FES upstream region; dibasic processing enzyme; dibasic-processing enzyme; furin, membrane associated receptor protein; proprotein convertase subtilisin/kexin type 3; paired basic amino acid residue-cleaving enzyme; EC 3.4.21.75; paired basic amino acid cleaving enzyme (furin, membrane associated receptor protein)

Gene ID [5045](#)

mRNA Refseq [NM_002569](#)

Protein Refseq [NP_002560](#)

MIM [136950](#)

UniProt ID [P09958](#)

Chromosome Location 15q26.1

Pathway Metabolism of proteins; Signaling by Notch; Signaling by PDGF; Signaling by TGF beta; Signalling by NGF

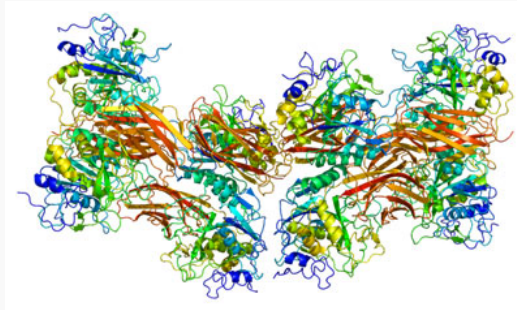
Function endopeptidase activity; metal ion binding; nerve growth factor binding; peptidase activity; peptide binding; protease binding; protein binding; serine-type endopeptidase activity; serine-type endopeptidase inhibitor activity

 Tel: 1-631-559-9269 1-516-512-3133

 Email: info@creative-biomart.com  Fax: 1-631-938-8127

 45-1 Ramsey Road, Shirley, NY 11967, USA

PDB rendering based
on 1p8j.



 Tel: 1-631-559-9269 1-516-512-3133

 Email: info@creative-biomart.com  Fax: 1-631-938-8127

 45-1 Ramsey Road, Shirley, NY 11967, USA