

Recombinant Full Length Human FURIN Protein, C-Flag-tagged

Cat. No. FURIN-861HFL Lot. No. (See product label)

SPECIFICATION

Product Overview

Recombinant Full Length Human FURIN Protein, fused to Flag-tag at C-terminus, was expressed in Mammalian cells.

Species

Human

Source

Mammalian Cells

Description

This gene encodes a member of the subtilisin-like proprotein convertase family, which includes proteases that process protein and peptide precursors trafficking through regulated or constitutive branches of the secretory pathway. It encodes a type 1 membrane bound protease that is expressed in many tissues, including neuroendocrine, liver, gut, and brain. The encoded protein undergoes an initial autocatalytic processing event in the ER and then sorts to the trans-Golgi network through endosomes where a second autocatalytic event takes place and the catalytic activity is acquired. Like other members of this convertase family, the product of this gene specifically cleaves substrates at single or paired basic residues. Some of its substrates include parathyroid hormone, transforming growth factor beta 1 precursor, proalbumin, pro-beta-secretase, membrane type-1 matrix metalloproteinase, beta subunit of pro-nerve growth factor and von Willebrand factor. It is thought to be one of the proteases responsible for the activation of HIV envelope glycoproteins gp160 and gp140, and may play a role in tumor progression. Unlike SARS-CoV and other coronaviruses, the spike protein of SARS-CoV-2 is thought to be uniquely cleaved by this protease. Alternative splicing results in multiple transcript

 Tel: 1-631-559-9269 1-516-512-3133

 Email: info@creative-biomart.com  Fax: 1-631-938-8127

 45-1 Ramsey Road, Shirley, NY 11967, USA

	variants.
Form	25 mM Tris HCl, pH 7.3, 100 mM glycine, 10% glycerol.
Molecular Mass	86.5 kDa
AA Sequence	<p>MELRPWLLWVVAATGTLVLLAADAQGQKVFTNTWAVRIPGGPAVANSVARKHGFL NLGQIFGDYYHFWHR GVTKRSLSPHRPRHSRLQREPQVQWLEQQVAKRRTKRDV YQEPTDPKFPQQWYLSGVTQRDLNVKAAWAQ GYTGHGIVVSILDDGIEKNHPDLA GNYDPGASFDVNDQDPDPQPRYTQMNDNRHGTRCAGEVA AVANNGV CGVGVAY NARIGGVRMLDGEVTD AVEARSLGLNPNHIHIYSASWGPEDDGKTV DGPARLAE EA FFRGVSQ GRGGLGSIFVWASGNGGREHDSNCNCDGYTNSIYTLSISSATQFGNVPW YSEACSSTLATTYSSGNQNEKQ IVTTDLRQKCTESHTGTSASAPLAAGI IALTLEANK NLTWRDMQHLLVQTSKPAHLNANDWATNGVGRKV SHSYGYGLLDAGAMVALAQN WTTVAPQRKCIIDILTEPKDIGKRLEVRKTVTACLGEPNHITRLEHAQAR LTLSYNRR GD LAIHLVSPMGTRSTLLAARPHDYSADGFNDWAFMTTHSWDEDPSGEVVLEIENT SEANNY GTLTKFTLVLYGTAPEGLPVPPESSGCKTLTSSQACVVCEEGFSLHQKSC VQHCPPGFAPQVLDTHYSTE NDVETIRASVCAPCHASCATCQGPALTDCLSCPSHA SLDPVEQTCSRQSQSSRESPPQQQPPRLPPEVEA GQRLRAGLLPSHLPEVVAGLS CAFIVLVFVTVFLVLQLRSGFSFRGVK VYTM DRGLISYKGLPPEAWQEE CPSDSEEDEGRGERTAFIKDQSALTRTRPLEQKLISEEDLAANDILDYKDDDDKV</p>
Purity	> 80% as determined by SDS-PAGE and Coomassie blue staining.
Stability	Stable for 12 months from the date of receipt of the product under proper storage and handling conditions. Avoid repeated freeze-thaw cycles.
Storage	Store at -80 centigrade.
Concentration	>50 ug/mL as determined by microplate BCA method.

 Tel: 1-631-559-9269 1-516-512-3133

 Email: info@creative-biomart.com  Fax: 1-631-938-8127

 45-1 Ramsey Road, Shirley, NY 11967, USA

Preparation Recombinant protein was captured through anti-DDK affinity column followed by conventional chromatography steps.

Protein Families Druggable Genome, Protease, Transmembrane

Full Length Full L.

GENE INFORMATION

Gene Name FURIN furin, paired basic amino acid cleaving enzyme [Homo sapiens (human)]

Official Symbol FURIN

Synonyms FUR; PACE; SPC1; PCSK3

Gene ID 5045

mRNA Refseq NM_002569.4


Protein Refseq NP_002560.1

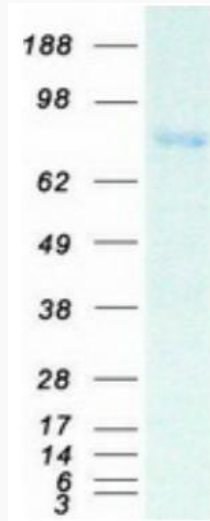
MIM 136950

UniProt ID P09958

 Tel: 1-631-559-9269 1-516-512-3133

 Email: info@creative-biomart.com  Fax: 1-631-938-8127

 45-1 Ramsey Road, Shirley, NY 11967, USA



Coomassie blue staining of purified FURIN protein.

 Tel: 1-631-559-9269 1-516-512-3133

 Email: info@creative-biomart.com  Fax: 1-631-938-8127

 45-1 Ramsey Road, Shirley, NY 11967, USA