

Recombinant Human FUT4 Protein, GST-tagged

Cat. No. FUT4-4563H **Lot. No.** (See product label)

SPECIFICATION

Product Overview	Human FUT4 partial ORF (NP_002024.1, 167 a.a. - 265 a.a.) recombinant protein with GST-tag at N-terminal.
Species	Human
Source	Wheat Germ
Description	The product of this gene transfers fucose to N-acetyllactosamine polysaccharides to generate fucosylated carbohydrate structures. It catalyzes the synthesis of the non-sialylated antigen, Lewis x (CD15). [provided by RefSeq]
Molecular Mass	36.63 kDa
AA Sequence	ITYACWGQLPPLPWASPTPSRPVGVLLWWEFPGGRDSAPRPPDCRLRFNISGCR LLTDRASYGEAQAVLFHHRDLVKGPPDWPPPWGIQAHTAEEVDL
Applications	Enzyme-linked Immunoabsorbent Assay Western Blot (Recombinant protein) Antibody Production Protein Array
Notes	Best use within three months from the date of receipt of this protein.
Storage	Store at -80 centigrade. Aliquot to avoid repeated freezing and thawing.

 Tel: 1-631-559-9269 1-516-512-3133

 Email: info@creative-biomart.com  Fax: 1-631-938-8127

 45-1 Ramsey Road, Shirley, NY 11967, USA

Storage Buffer 50 mM Tris-HCl, 10 mM reduced Glutathione, pH=8.0 in the elution buffer.

GENE INFORMATION

Gene Name [FUT4 fucosyltransferase 4 \(alpha \(1,3\) fucosyltransferase, myeloid-specific\) \[Homo sapiens \]](#)

Official Symbol [FUT4](#)

Synonyms [FUT4](#); fucosyltransferase 4 (alpha (1,3) fucosyltransferase, myeloid-specific); CD15, ELFT, FCT3A; alpha-(1,3)-fucosyltransferase; ELAM ligand fucosyltransferase; FUC TIV; galactoside 3 L fucosyltransferase; Lewis X; fucT-IV; fucosyltransferase IV; ELAM-1 ligand fucosyltransferase; galactoside 3-L-fucosyltransferase; stage-specific embryonic antigen 1; LeX; CD15; ELFT; FCT3A; FUTIV; SSEA-1; FUC-TIV;

Gene ID [2526](#)

mRNA Refseq [NM_002033](#)

Protein Refseq [NP_002024](#)

MIM [104230](#)

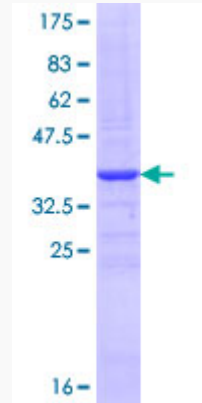
UniProt ID [P22083](#)

 Tel: 1-631-559-9269 1-516-512-3133

 Email: info@creative-biomart.com  Fax: 1-631-938-8127

 45-1 Ramsey Road, Shirley, NY 11967, USA

**Quality Control
Testing**



12.5% SDS-PAGE Stained with Coomassie Blue.

 Tel: 1-631-559-9269 1-516-512-3133

 Email: info@creative-biomart.com  Fax: 1-631-938-8127

 45-1 Ramsey Road, Shirley, NY 11967, USA