

Recombinant Human FUT8 protein, GST-tagged

Cat. No. FUT8-8966H Lot. No. (See product label)

SPECIFICATION

Product Overview	Recombinant Human FUT8 protein(340-450 aa), fused with N-terminal GST tag, was expressed in E. coli.
Species	Human
Source	E. coli
ProteinLength	340-450 aa
Form	The purified protein was lyophilized from sterile phosphate-buffered saline (PBS: 58 mM Na ₂ HPO ₄ , 17 mM NaH ₂ PO ₄ , 68 mM NaCl, pH 8.0). Prior to lyophilization, 5% (w/v) trehalose and 5% (w/v) mannitol were incorporated as cryoprotective excipients. The protein was eluted with a buffer containing 100 mM reduced glutathione (GSH).
AASequence	PWLEKEIEEATKKLGFKHPVIGVHVRRTDKVGTEAAFHPIEEYMVHVEEHFQLLARR MQVDKRVYLATDDPSSLKEAKTKYPNYEFISDNSISWSAGLHNRYTENSRLRGV
Purity	85%, by SDS-PAGE.
Storage	Store at 2-8°C for 1-2 weeks. Aliquot and store at -20°C to -80°C for up to 3 months, reconstitution with sterile water and addition of an equal volume of glycerol. Avoid repeat freeze-thaw cycles.
Reconstitution	It is recommended that sterile water be added to the vial to prepare a stock solution of

 Tel: 1-631-559-9269 1-516-512-3133

 Email: info@creative-biomart.com  Fax: 1-631-938-8127

 45-1 Ramsey Road, Shirley, NY 11967, USA

0.25 ug/ul. Centrifuge the vial at 4°C before opening to recover the entire contents.

GENE INFORMATION

Gene Name	FUT8 fucosyltransferase 8 (alpha (1,6) fucosyltransferase) [Homo sapiens]
Official Symbol	FUT8
Synonyms	FUT8; fucosyltransferase 8 (alpha (1,6) fucosyltransferase); alpha-(1,6)-fucosyltransferase; alpha1-6FucT; glycoprotein 6-alpha-L-fucosyltransferase; GDP-fucose--glycoprotein fucosyltransferase; GDP-L-Fuc:N-acetyl-beta-D-glucosaminide alpha1,6-fucosyltransferase; MGC26465;
mRNA Refseq	NM_004480
Protein Refseq	NP_004471
MIM	602589
UniProt ID	Q9BYC5
Gene ID	2530

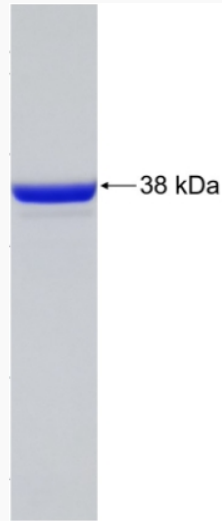
 Tel: 1-631-559-9269 1-516-512-3133

 Email: info@creative-biomart.com  Fax: 1-631-938-8127

 45-1 Ramsey Road, Shirley, NY 11967, USA



SDS-PAGE



Tel: 1-631-559-9269 1-516-512-3133

Email: info@creative-biomart.com Fax: 1-631-938-8127

45-1 Ramsey Road, Shirley, NY 11967, USA