

Recombinant Human FXC1 Protein, GST-tagged

Cat. No. FXC1-4574H **Lot. No.** (See product label)

SPECIFICATION

Product Overview	Human FXC1 full-length ORF (AAH11014, 1 a.a. - 103 a.a.) recombinant protein with GST-tag at N-terminal.
Species	Human
Source	Wheat Germ
Description	FXC1, or TIMM10B, belongs to a family of evolutionarily conserved proteins that are organized in heterooligomeric complexes in the mitochondrial intermembrane space. These proteins mediate the import and insertion of hydrophobic membrane proteins into the mitochondrial inner membrane.[supplied by OMIM
Molecular Mass	37.07 kDa
AA Sequence	MERQQQQQQQLRNLRDFLLVYNRMTELCFQRCVPSLHHRALDAEEEEACLHSCAGK LIHSNHRLMAAYVQLMPALVQRRIADYEAASTVPSVAAEQPGVSPSGS
Applications	Enzyme-linked Immunoabsorbent Assay Western Blot (Recombinant protein) Antibody Production Protein Array
Notes	Best use within three months from the date of receipt of this protein.
Storage	Store at -80 centigrade. Aliquot to avoid repeated freezing and thawing.

 Tel: 1-631-559-9269 1-516-512-3133

 Email: info@creative-biomart.com  Fax: 1-631-938-8127

 45-1 Ramsey Road, Shirley, NY 11967, USA

Storage Buffer 50 mM Tris-HCl, 10 mM reduced Glutathione, pH=8.0 in the elution buffer.

GENE INFORMATION

Gene Name FXC1 fracture callus 1 homolog (rat) [Homo sapiens]

Official Symbol FXC1

Synonyms FXC1; fracture callus 1 homolog (rat); fracture callus 1 (rat) homolog; mitochondrial import inner membrane translocase subunit Tim9 B; Tim9b; TIM10B; TIMM10B; fracture callus protein 1;

Gene ID 26515

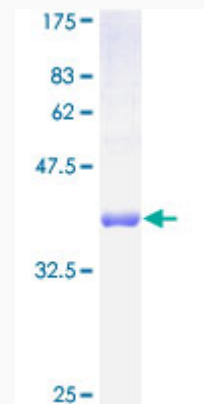
mRNA Refseq NM_012192

Protein Refseq NP_036324

MIM 607388

UniProt ID Q9Y5J6

Quality Control Testing



 Tel: 1-631-559-9269 1-516-512-3133

 Email: info@creative-biomart.com  Fax: 1-631-938-8127

 45-1 Ramsey Road, Shirley, NY 11967, USA



12.5% SDS-PAGE Stained with Coomassie Blue.

 Tel: 1-631-559-9269 1-516-512-3133

 Email: info@creative-biomart.com  Fax: 1-631-938-8127

 45-1 Ramsey Road, Shirley, NY 11967, USA