

Recombinant Human FXR1 protein, His-tagged

Cat. No. FXR1-546H Lot. No. (See product label)

SPECIFICATION

Product Overview	Recombinant Human FXR1 protein(P51114)(354-621aa), fused with C-terminal His tag, was expressed in E.coli.
Species	Human
Source	E.coli
ProteinLength	354-621aa
Form	If the delivery form is liquid, the default storage buffer is Tris/PBS-based buffer, 5%-50% glycerol. If the delivery form is lyophilized powder, the buffer before lyophilization is Tris/PBS-based buffer, 6% Trehalose, pH 8.0.
Molecular Mass	30.7 kDa
Purity	Greater than 85% as determined by SDS-PAGE.
Storage	Store at -20°C/-80°C upon receipt, aliquoting is necessary for mutiple use. Avoid repeated freeze-thaw cycles.
Reconstitution	We recommend that this vial be briefly centrifuged prior to opening to bring the contents to the bottom. Please reconstitute protein in deionized sterile water to a concentration of 0.1-1.0 mg/mL. We recommend to add 5-50% of glycerol (final concentration) and aliquot for long-term storage at -20°C/-80°C.

 Tel: 1-631-559-9269 1-516-512-3133

 Email: info@creative-biomart.com  Fax: 1-631-938-8127

 45-1 Ramsey Road, Shirley, NY 11967, USA



AA Sequence

HIAYLKEVEQLRMERLQIDEQLRQIGSRYSYSGRGRGRRGPNYTSGYGTNSELSNPS
ETESERKDELSDWSLAGEDDRDSRHQRDSRRRPGGRRGRSVSGGRGRGGPRGGK
SSISSVLKDPDSNPYSLLDNTESDQTADTDASESHHSTNRRRRSRRRRTDEDAVLM
DGMTESDTASVNEGLVTVADYISRAESQSRQRNLPRETLAKNKKEMAKDVIEEHG
PSEKAINGPTSASGDDISKLRTPGEEKINTLKEENTQEAAVLNGVS

GENE INFORMATION

Gene Name	FXR1 fragile X mental retardation, autosomal homolog 1 [Homo sapiens]
Official Symbol	FXR1
Synonyms	FXR1; fragile X mental retardation, autosomal homolog 1; fragile X mental retardation syndrome-related protein 1; hFXR1p; FXR1P;
Gene ID	8087
mRNA Refseq	NM_001013438
Protein Refseq	NP_001013456
MIM	600819
UniProt ID	P51114

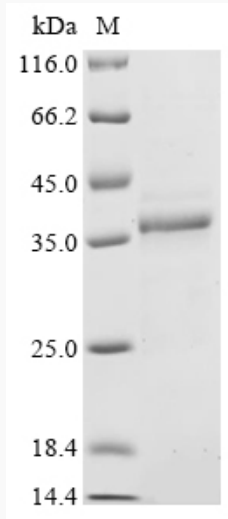
Tel: 1-631-559-9269 1-516-512-3133

Email: info@creative-biomart.com Fax: 1-631-938-8127

45-1 Ramsey Road, Shirley, NY 11967, USA



SDS-PAGE



Tel: 1-631-559-9269 1-516-512-3133

Email: info@creative-biomart.com Fax: 1-631-938-8127

45-1 Ramsey Road, Shirley, NY 11967, USA