

# Recombinant Human FYN Protein, Myc/DDK-tagged, C13 and N15-labeled

**Cat. No.** FYN-1388H    **Lot. No.** (See product label)

## SPECIFICATION

|                         |   |
|-------------------------|---|
| <b>Product Overview</b> | FYN MS Standard C13 and N15-labeled recombinant protein (NP_694593) with a C-terminal MYC/DDK tag, was expressed in HEK293 cells.   |
| <b>Species</b>          | Human   |
| <b>Source</b>           | HEK293  |
| <b>Description</b>      | This gene is a member of the protein-tyrosine kinase oncogene family. It encodes a membrane-associated tyrosine kinase that has been implicated in the control of cell growth. The protein associates with the p85 subunit of phosphatidylinositol 3-kinase and interacts with the fyn-binding protein. Alternatively spliced transcript variants encoding distinct isoforms exist.   |
| <b>Molecular Mass</b>   | 54.5 kDa  |
| <b>AA Sequence</b>      | <p>MGCVQCKDKEATKLTEERDGLNQSSGYRYGTDPTPQHYPFSGVTSIPNYNNFHA<br/> AGGQGLTVFGGVNSSHTGTLRTRGGTGVTLFVALYDYEARTEDDLFSHKGEKFQI<br/> LNSSEGDWWEARSLTTGETGYIPSNVAPVDSIQAEWYFGKLGKDAERQLLSFG<br/> NPRGTFLIRESETTKGAYSLSIRDWDDMKGDHVKHYKIRKLDNGGYYITTRAQFETL<br/> QQLVQHYSGTWNNGNTKVAIKTLKPGTMSPEFLEEAIQMKKLDKLVQLYAVVSE<br/> EPIYIVTEYMNKGSLLDLFDGEGRALKLPNLVDMAAQVAAGMAYIERMNYIHRDLR<br/> SANILVGNGLICKIADFGLARLIEDNEYTARQGAKFPIKWTAPEAALYGRFTIKSDVWS<br/> FGILLTELVTKGRVPYPGMNNREVLEQVERGYRMPCPQDCPISLHELMIHCWKKDP</p> |

 Tel: 1-631-559-9269    1-516-512-3133

 Email: [info@creative-biomart.com](mailto:info@creative-biomart.com)     Fax: 1-631-938-8127

 45-1 Ramsey Road, Shirley, NY 11967, USA

|                         |  |
|-------------------------|--|
|                         | EERPTFEYQLQSFLEDYFTATEPQYQPGENLTRTRPLEQKLISEEDLAANDILDYKDDD<br>DKV   |
| <b>Purity</b>           | > 80% as determined by SDS-PAGE and Coomassie blue staining  |
| <b>Stability</b>        | Stable for 3 months from receipt of products under proper storage and handling conditions.   |
| <b>Storage</b>          | Store at -80 centigrade. Avoid repeated freeze-thaw cycles.  |
| <b>Concentration</b>    | 50 µg/mL as determined by BCA  |
| <b>Storage Buffer</b>   | 100 mM glycine, 25 mM Tris-HCl, pH 7.3.  |
| <b>GENE INFORMATION</b> |  |
| <b>Gene Name</b>        | FYN FYN proto-oncogene, Src family tyrosine kinase [ Homo sapiens (human) ]  |
| <b>Official Symbol</b>  | FYN  |
| <b>Synonyms</b>         | FYN; FYN oncogene related to SRC, FGR, YES; tyrosine-protein kinase Fyn; MGC45350; SLK; SYN; src-like kinase; proto-oncogene Syn; c-syn protooncogene; proto-oncogene c-Fyn; src/yes-related novel; tyrosine kinase p59fyn(T); OKT3-induced calcium influx regulator; p59-FYN; |
| <b>Gene ID</b>          | 2534   |
| <b>mRNA Refseq</b>      | NM_153048  |
| <b>Protein Refseq</b>   | NP_694593  |

 Tel: 1-631-559-9269 1-516-512-3133

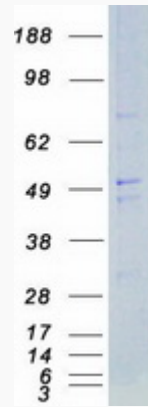
 Email: [info@creative-biomart.com](mailto:info@creative-biomart.com)  Fax: 1-631-938-8127

 45-1 Ramsey Road, Shirley, NY 11967, USA

**MIM** 137025

**UniProt ID** P06241

**SDS-PAGE**



 Tel: 1-631-559-9269 1-516-512-3133

 Email: [info@creative-biomart.com](mailto:info@creative-biomart.com)  Fax: 1-631-938-8127

 45-1 Ramsey Road, Shirley, NY 11967, USA