

Recombinant Human FYN Oncogene Related To SRC, FGR, YES, His-tagged

Cat. No. FYN-2128H **Lot. No.** (See product label)

SPECIFICATION

Product Overview	Recombinant full length human FynT produced in <i>insect cells</i> is fused to a his-tag.
Species	Human
Source	Insect Cells
Description	Fyn, a Src family tyrosine kinase, is important for normal development and function of T lymphocytes. Proto-oncogene tyrosine-protein kinase Fyn is an enzyme that in humans is encoded by the FYN gene. This gene is a member of the protein-tyrosine kinase oncogene family. It encodes a membrane-associated tyrosine kinase that has been implicated in the control of cell growth. The protein associates with the p85 subunit of phosphatidylinositol 3-kinase and interacts with the fyn-binding protein. Alternatively spliced transcript variants encoding distinct isoforms exist.
Source/Host	insect cells.
MW	63 kDa.
Application	Kinetics and functional studies, phosphorylation of target substrates, drug screening.
Long Term Storage	-20°C.
Full Length	Full L.

 Tel: 1-631-559-9269 1-516-512-3133

 Email: info@creative-biomart.com  Fax: 1-631-938-8127

 45-1 Ramsey Road, Shirley, NY 11967, USA

GENE INFORMATION

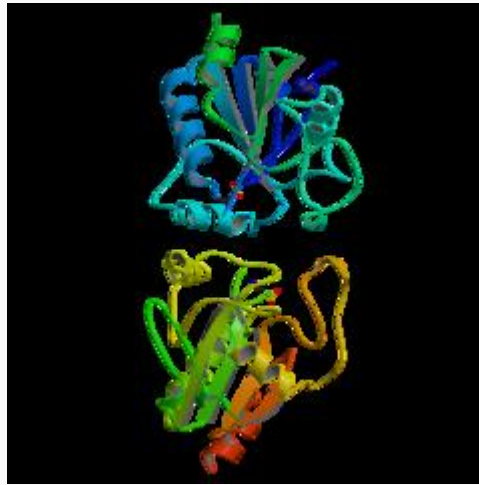
Gene Name	FYN FYN oncogene related to SRC, FGR, YES [Homo sapiens]
Synonyms	FYN oncogene related to SRC, FGR, YES; SLK; SYN; MGC45350; FYN; proto-oncogene tyrosine-protein kinase fyn; src-like kinase; Protooncogene Syn; OTTHUMP00000017917; c-syn protooncogene; src/yes-related novel; tyrosine kinase p59fyn(T); p59-Fyn; protein-tyrosine kinase fyn ; OKT3-induced calcium influx regulator; EC 2.7.10.2; OTTHUMP00000017915; OTTHUMP00000017914; src-like kinase
Gene ID	2534
mRNA Refseq	NM_002037
Protein Refseq	NP_002028
MIM	137025
UniProt ID	P06241
Chromosome Location	6q21
Pathway	Adherens junction; Axon guidance; Fc epsilon RI signaling pathway; Focal adhesion; Natural killer cell mediated cytotoxicity; Pathogenic Escherichia coli infection; Prion diseases; T cell receptor signaling pathway
Function	non-membrane spanning protein tyrosine kinase activity; ATP binding; glycoprotein binding; identical protein binding; manganese ion binding; metal ion binding; nucleotide binding; transferase activity; tubulin binding

 Tel: 1-631-559-9269 1-516-512-3133

 Email: info@creative-biomart.com  Fax: 1-631-938-8127

 45-1 Ramsey Road, Shirley, NY 11967, USA

PDB rendering based
on 1a0n.



 Tel: 1-631-559-9269 1-516-512-3133

 Email: info@creative-biomart.com  Fax: 1-631-938-8127

 45-1 Ramsey Road, Shirley, NY 11967, USA