

# Recombinant Human FYN Protein, Myc/DDK-tagged, C13 and N15-labeled

**Cat. No.** FYN-3213H    **Lot. No.** (See product label)

## SPECIFICATION

### Product Overview

FYN MS Standard C13 and N15-labeled recombinant protein (NP\_002028) with a C-terminal MYC/DDK tag, was expressed in HEK293 cells.

### Species

Human

### Source

HEK293

### Description

This gene is a member of the protein-tyrosine kinase oncogene family. It encodes a membrane-associated tyrosine kinase that has been implicated in the control of cell growth. The protein associates with the p85 subunit of phosphatidylinositol 3-kinase and interacts with the fyn-binding protein. Alternatively spliced transcript variants encoding distinct isoforms exist.

### Molecular Mass

60.6 kDa

### AA Sequence

MGCVQCKDKEATKLTEERDGLNQSSGYRYGTDPTPQHYPSEFGVTSIPNYNNFHA  
 AGGQGLTVFGGVNSSHTGTLRTRGGTGVTLFVALDYEARTEDDLFSHKGEKFQI  
 LNSSEGDWWEARSLTTGETGYIPSNYVAPVDSIQAEWYFGKLGRKDAERQLLSFG  
 NPRGTFLIRESETTKGAYSLSIRDWDDMKGDHVKHYKIRKLDNGGYYITTRAQFETL  
 QQLVQHYSERAAAGLCCRLVVPCHKGMPRLTDLSVKT KD VWEIPRESLQLIKRLGNG  
 QFGEVWMGTWNGNTKVAIKTLKPGTMSPEFLEEAIQIMKKLKHDKLVQLYAVVSEE  
 PIYIVTEYMNKGSLLDFLKDGEGRALKLPNLVDMAAQVAAGMAYIERMNYIHRDLRS  
 ANILVGNGLICKIADFLARLIEDNEYTARQGAKFPIKWTAPEAALYGRFTIKSDVWSF

 Tel: 1-631-559-9269    1-516-512-3133

 Email: [info@creative-biomart.com](mailto:info@creative-biomart.com)     Fax: 1-631-938-8127

 45-1 Ramsey Road, Shirley, NY 11967, USA

GILLTELVTKGRVPYPGMNNREVLEQVERGYRMPCPQDCPISLHELMIHCWKKDPE  
ERPTFEYLQSFLEDYFTATEPQYQPGENLTRTRPLEQKLISEEDLAANDILDYKDDDD  
KV

**Purity** > 80% as determined by SDS-PAGE and Coomassie blue staining

**Stability** Stable for 3 months from receipt of products under proper storage and handling conditions.

**Storage** Store at -80 centigrade. Avoid repeated freeze-thaw cycles.

**Concentration** 50 µg/mL as determined by BCA

**Storage Buffer** 100 mM glycine, 25 mM Tris-HCl, pH 7.3.

## GENE INFORMATION

**Gene Name** FYN FYN proto-oncogene, Src family tyrosine kinase [ Homo sapiens (human) ]

**Official Symbol** FYN

**Synonyms** FYN; FYN oncogene related to SRC, FGR, YES; tyrosine-protein kinase Fyn; MGC45350; SLK; SYN; src-like kinase; proto-oncogene Syn; c-syn protooncogene; proto-oncogene c-Fyn; src/yes-related novel; tyrosine kinase p59fyn(T); OKT3-induced calcium influx regulator; p59-FYN;

**Gene ID** 2534

**mRNA Refseq** NM\_002037

**Protein Refseq** NP\_002028

 Tel: 1-631-559-9269 1-516-512-3133

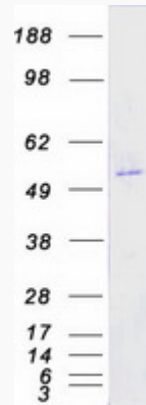
 Email: [info@creative-biomart.com](mailto:info@creative-biomart.com)  Fax: 1-631-938-8127

 45-1 Ramsey Road, Shirley, NY 11967, USA

MIM 137025

UniProt ID P06241

SDS-PAGE



 Tel: 1-631-559-9269 1-516-512-3133

 Email: [info@creative-biomart.com](mailto:info@creative-biomart.com)  Fax: 1-631-938-8127

 45-1 Ramsey Road, Shirley, NY 11967, USA