

# Recombinant Human frizzled class receptor 10 Protein, His&Fc tagged

**Cat. No.** FZD10-13H    **Lot. No.** (See product label)

## SPECIFICATION

<b>Product Overview</b>	Recombinant human Frizzled-10 (21-225aa), fused to hlgG-His-tag at C-terminus, was expressed in HEK293 cell and purified by using conventional chromatography techniques.
<b>Species</b>	Human
<b>Source</b>	HEK293
<b>ProteinLength</b>	21-225aa
<b>Description</b>	This gene is a member of the frizzled gene family. Members of this family encode 7-transmembrane domain proteins that are receptors for the Wingless type MMTV integration site family of signaling proteins. Most frizzled receptors are coupled to the beta-catenin canonical signaling pathway. Using array analysis, expression of this intronless gene is significantly up-regulated in two cases of primary colon cancer.
<b>Tag</b>	C-His&Fc
<b>Form</b>	Liquid
<b>Molecular Mass</b>	50 kDa
<b>AA Sequence</b>	ISSMDMERPGDGKQCPIEIPMCKDIGYNMTRMPNLMGHENQREAAIQLHEFAPLVE YGCHGHLRFFLCSLYAPMCTEQVSTPIPACRVMCEQARLKCSPIMEQFNFKWPDSL

 Tel: 1-631-559-9269    1-516-512-3133

 Email: [info@creative-biomart.com](mailto:info@creative-biomart.com)     Fax: 1-631-938-8127

 45-1 Ramsey Road, Shirley, NY 11967, USA

DCRKLPNKNDPNYLCMEAPNNGSDEPTRGSGLFPPFLFRPQRPHSAQEHPLKDGGP  
GRGGCDNPGKFHHVEKSASCAPLCTPGVDVYWSREDKR

**Endotoxin** < 1 EU/μg, determined by LAL method.

**Purity** > 90% by SDS-PAGE

**Applications** SDS-PAGE

**Storage** Can be stored at +2 to +8 centigrade for 1 week. For long term storage, aliquot and store at -20 to -80 centigrade. Avoid repeated freezing and thawing cycles.

**Concentration** 0.5 mg/mL (determined by Absorbance at 280nm)

**Storage Buffer** Phosphate-Buffered Saline (pH 7.4) containing 10% glycerol

## GENE INFORMATION

**Gene Name** [FZD10 frizzled class receptor 10 \[ Homo sapiens \(human\) \]](#)

**Official Symbol** [FZD10](#)

**Synonyms** FZD10; frizzled class receptor 10; Fz10; FzE7; CD350; FZ-10; hFz10; frizzled-10; frizzled 10, seven transmembrane spanning receptor; frizzled family receptor 10; frizzled homolog 10

**Gene ID** [11211](#)

**mRNA Refseq** [NM\\_007197](#)

**Protein Refseq** [NP\\_009128](#)

 Tel: 1-631-559-9269 1-516-512-3133

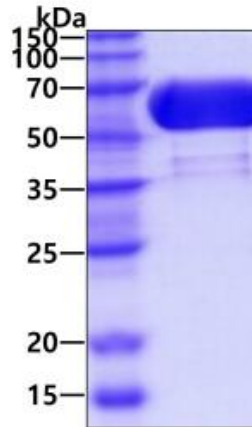
 Email: [info@creative-biomart.com](mailto:info@creative-biomart.com)  Fax: 1-631-938-8127

 45-1 Ramsey Road, Shirley, NY 11967, USA

MIM 606147

UniProt ID Q9ULW2

SDS-PAGE



3  $\mu$ g by SDS-PAGE under reducing condition and visualized by coomassie blue stain.

 Tel: 1-631-559-9269 1-516-512-3133

 Email: [info@creative-biomart.com](mailto:info@creative-biomart.com)  Fax: 1-631-938-8127

 45-1 Ramsey Road, Shirley, NY 11967, USA