

Recombinant Human FZD10 Protein (Met1-Gly161), C-Fc tagged

Cat. No. FZD10-3969H Lot. No. (See product label)

SPECIFICATION

Product Overview	Recombinant human FZD10 (Met1-Gly161) fused with the C-terminal Fc tag was expressed in mammalian cells.
Species	Human
Source	Mammalian Cells
ProteinLength	Met1-Gly161
Form	Lyophilized powder/frozen liquid
Molecular Mass	42.71 kDa
Endotoxin	< 1.0 EU/μg of the protein as determined by the LAL method.
Purity	>90% as determined by SDS-PAGE.
Notes	For research use only.
Storage	Use a manual defrost freezer and avoid repeated freeze thaw cycles. Store at 2 to 8 centigrade for one week. Store at -20 to -80 centigrade for twelve months from the date of receipt.
Storage Buffer	Supplied as solution form in PBS or lyophilized from PBS.

 Tel: 1-631-559-9269 1-516-512-3133

 Email: info@creative-biomart.com  Fax: 1-631-938-8127

 45-1 Ramsey Road, Shirley, NY 11967, USA

Reconstitution Reconstitute in sterile water for a stock solution.

Shipping They are shipped out with dry ice/blue ice unless customers require otherwise.

GENE INFORMATION

Gene Name FZD10 frizzled family receptor 10 [Homo sapiens (human)]

Official Symbol FZD10

Synonyms FZD10; frizzled family receptor 10; frizzled (Drosophila) homolog 10, frizzled 10, seven transmembrane spanning receptor, frizzled homolog 10 (Drosophila); frizzled-10; CD350; frizzled homolog 10; frizzled 10, seven transmembrane spanning receptor; Fz10; FzE7; FZ-10; hFz10;

Gene ID 11211

mRNA Refseq NM_007197

Protein Refseq NP_009128

MIM 606147

UniProt ID Q6NSL8

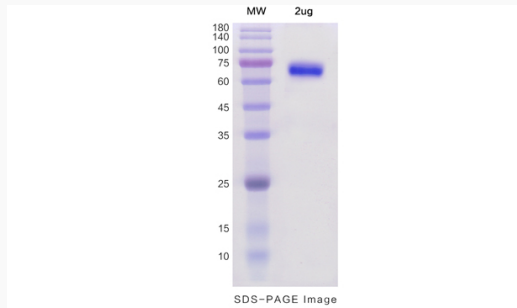
 Tel: 1-631-559-9269 1-516-512-3133

 Email: info@creative-biomart.com  Fax: 1-631-938-8127

 45-1 Ramsey Road, Shirley, NY 11967, USA



SDS-PAGE



Tel: 1-631-559-9269 1-516-512-3133

Email: info@creative-biomart.com Fax: 1-631-938-8127

45-1 Ramsey Road, Shirley, NY 11967, USA