

Recombinant Human FZD10 Protein, GST-tagged

Cat. No. FZD10-4590H **Lot. No.** (See product label)

SPECIFICATION

Product Overview	Human FZD10 partial ORF (NP_009128.1, 96 a.a. - 183 a.a.) recombinant protein with GST-tag at N-terminal.
Species	Human
Source	Wheat Germ
Description	This gene is a member of the frizzled gene family. Members of this family encode 7-transmembrane domain proteins that are receptors for the Wingless type MMTV integration site family of signaling proteins. Most frizzled receptors are coupled to the beta-catenin canonical signaling pathway. Using array analysis, expression of this intronless gene is significantly up-regulated in two cases of primary colon cancer. [provided by RefSeq]
Molecular Mass	35.42 kDa
AA Sequence	TEQVSTPIPACRVMCEQARLKCSPIMEQFNFKWPDSLDCRKLPNKNDPNYLCMEAP NNGSDEPTRGSGLPPLFRPQRPHSAQEHPLK
Applications	Enzyme-linked Immunoabsorbent Assay Western Blot (Recombinant protein) Antibody Production Protein Array
Notes	Best use within three months from the date of receipt of this protein.

 Tel: 1-631-559-9269 1-516-512-3133

 Email: info@creative-biomart.com  Fax: 1-631-938-8127

 45-1 Ramsey Road, Shirley, NY 11967, USA

Storage Store at -80 centigrade. Aliquot to avoid repeated freezing and thawing.

Storage Buffer 50 mM Tris-HCl, 10 mM reduced Glutathione, pH=8.0 in the elution buffer.

GENE INFORMATION

Gene Name [FZD10 frizzled family receptor 10 \[Homo sapiens \]](#)

Official Symbol [FZD10](#)

Synonyms FZD10; frizzled family receptor 10; frizzled (Drosophila) homolog 10, frizzled 10, seven transmembrane spanning receptor, frizzled homolog 10 (Drosophila); frizzled-10; CD350; frizzled homolog 10; frizzled 10, seven transmembrane spanning receptor; Fz10; FzE7; FZ-10; hFz10;

Gene ID [11211](#)

mRNA Refseq [NM_007197](#)

Protein Refseq [NP_009128](#)

MIM [606147](#)

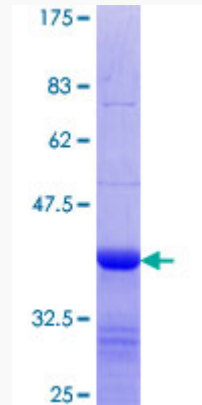
UniProt ID [Q9ULW2](#)

 Tel: 1-631-559-9269 1-516-512-3133

 Email: info@creative-biomart.com  Fax: 1-631-938-8127

 45-1 Ramsey Road, Shirley, NY 11967, USA

**Quality Control
Testing**



12.5% SDS-PAGE Stained with Coomassie Blue.

 Tel: 1-631-559-9269 1-516-512-3133

 Email: info@creative-biomart.com  Fax: 1-631-938-8127

 45-1 Ramsey Road, Shirley, NY 11967, USA