

Recombinant Human FZD2 Protein, GST-tagged

Cat. No. FZD2-4591H Lot. No. (See product label)

SPECIFICATION

Product Overview	Human FZD2 partial ORF (NP_001457, 192 a.a. - 245 a.a.) recombinant protein with GST-tag at N-terminal.
Species	Human
Source	Wheat Germ
Description	Members of the frizzled gene family encode 7-transmembrane domain proteins that are receptors for Wnt signaling proteins. The expression of the FZD2 gene appears to be developmentally regulated, with high levels of expression in fetal kidney and lung and in adult colon and ovary. [provided by RefSeq]
Molecular Mass	31.68 kDa
AA Sequence	YATLEHPFHCPRVLKVPSYLSYKFLGERDCAAPCEPARPDGSMFFSQEETRFAR
Applications	Enzyme-linked Immunoabsorbent Assay Western Blot (Recombinant protein) Antibody Production Protein Array
Notes	Best use within three months from the date of receipt of this protein.
Storage	Store at -80 centigrade. Aliquot to avoid repeated freezing and thawing.

 Tel: 1-631-559-9269 1-516-512-3133

 Email: info@creative-biomart.com  Fax: 1-631-938-8127

 45-1 Ramsey Road, Shirley, NY 11967, USA

Storage Buffer 50 mM Tris-HCl, 10 mM reduced Glutathione, pH=8.0 in the elution buffer.

GENE INFORMATION

Gene Name FZD2 frizzled family receptor 2 [Homo sapiens]

Official Symbol FZD2

Synonyms FZD2; frizzled family receptor 2; frizzled (Drosophila) homolog 2, frizzled 2, seven transmembrane spanning receptor, frizzled homolog 2 (Drosophila); frizzled-2; frizzled homolog 2; frizzled 2, seven transmembrane spanning receptor; Fz2; fz-2; fzE2; hFz2;

Gene ID 2535

mRNA Refseq NM_001466

Protein Refseq NP_001457

MIM 600667

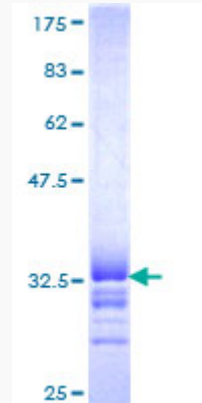
UniProt ID Q14332

 Tel: 1-631-559-9269 1-516-512-3133

 Email: info@creative-biomart.com  Fax: 1-631-938-8127

 45-1 Ramsey Road, Shirley, NY 11967, USA

**Quality Control
Testing**



12.5% SDS-PAGE Stained with Coomassie Blue.

 Tel: 1-631-559-9269 1-516-512-3133

 Email: info@creative-biomart.com  Fax: 1-631-938-8127

 45-1 Ramsey Road, Shirley, NY 11967, USA