

Recombinant Full Length Human FZR1 Protein, C-Flag-tagged

Cat. No. FZR1-1049HFL Lot. No. (See product label)

SPECIFICATION

Product Overview	Recombinant Full Length Human FZR1 Protein, fused to Flag-tag at C-terminus, was expressed in Mammalian cells.
Species	Human
Source	Mammalian Cells
Description	Predicted to enable anaphase-promoting complex binding activity and ubiquitin ligase activator activity. Involved in anaphase-promoting complex-dependent catabolic process; mitotic G2 DNA damage checkpoint signaling; and positive regulation of protein metabolic process. Located in nuclear membrane and nucleoplasm. Colocalizes with anaphase-promoting complex.
Form	25 mM Tris HCl, pH 7.3, 100 mM glycine, 10% glycerol.
Molecular Mass	54.6 kDa
AA Sequence	MDQDYERRLLRQIVIQNENTMPRVTEMRRTLTPASSPVSSPSKHGDRFIPSRAGAN WSVNFHRINENEKS PSQNRKAKDATSDNGKDGLAYSALLKNELLGAGIEKVQDPQT EDRRLQPSTPEKKGLFTYSLSTKRSSPD DGNDVSPYSLSPVSNKSQKLLRSPRKPT RKISKIPFKVLDAPELQDDFYLNLDWSSLNVLSVGLGTCVY LWSACTSQVTRLCDL SVEGDSVTSVGSERGNLVAVGTHKGFVQIWDAAAGKKLSMLEGHTARV GALAW N AEQLSSGSRDRMILQRDIRTPPLQSERRLQGHRQEVCGLKWSTDHQLLASGGND NKLLVWNHSSLSPVQQ YTEHLAAVKAIWSPHQHGLLASGGGTADRCIRFWNTLT GQPLQCIDTGSQVCNLAWSKHANELVSTHGY SQNQILVWKYPSLTQVAKLTGHSY

 Tel: 1-631-559-9269 1-516-512-3133

 Email: info@creative-biomart.com  Fax: 1-631-938-8127

 45-1 Ramsey Road, Shirley, NY 11967, USA

	RVLYLAMSPDGEAIVTGAGDETLRFWNVFSKTRSTKESVSVLNLFT RIRSGPTRTRPQLEQKLISEEDLAANDILDYKDDDDKV
Purity	> 80% as determined by SDS-PAGE and Coomassie blue staining.
Stability	Stable for 12 months from the date of receipt of the product under proper storage and handling conditions. Avoid repeated freeze-thaw cycles.
Storage	Store at -80 centigrade.
Concentration	>50 ug/mL as determined by microplate BCA method.
Preparation	Recombinant protein was captured through anti-DDK affinity column followed by conventional chromatography steps.
Protein Families	Druggable Genome
Protein Pathways	Cell cycle, Progesterone-mediated oocyte maturation, Ubiquitin mediated proteolysis
Full Length	Full L.
GENE INFORMATION	
Gene Name	FZR1 fizzy and cell division cycle 20 related 1 [Homo sapiens (human)]
Official Symbol	FZR1
Synonyms	FZR; CDH1; FZR2; HCDH; HCDH1; CDC20C; DEE109
Gene ID	51343

 Tel: 1-631-559-9269 1-516-512-3133

 Email: info@creative-biomart.com  Fax: 1-631-938-8127

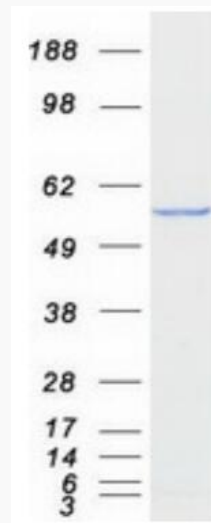
 45-1 Ramsey Road, Shirley, NY 11967, USA

mRNA Refseq [NM_016263.4](#)

Protein Refseq [NP_057347.2](#)

MIM [603619](#)

UniProt ID [Q9UM11](#)



Coomassie blue staining of purified FZR1 protein.

 Tel: 1-631-559-9269 1-516-512-3133

 Email: info@creative-biomart.com  Fax: 1-631-938-8127

 45-1 Ramsey Road, Shirley, NY 11967, USA