

Recombinant Mouse Fam3b protein(30-235aa), His&Myc-tagged

Cat. No. Fam3b-4746M **Lot. No.** (See product label)

SPECIFICATION

| | |
|-------------------------|--|
| Product Overview | Recombinant Mouse Fam3b protein(Q9D309)(30-235aa), fused with N-terminal His tag and C-terminal Myc tag, was expressed in E.coli. |
| Species | Mouse |
| Source | E.coli |
| ProteinLength | 30-235aa |
| Form | If the delivery form is liquid, the default storage buffer is Tris/PBS-based buffer, 5%-50% glycerol. If the delivery form is lyophilized powder, the buffer before lyophilization is Tris/PBS-based buffer, 6% Trehalose, pH 8.0. |
| Molecular Mass | 30.4 kDa |
| Purity | Greater than 90% as determined by SDS-PAGE. |
| Storage | Store at -20°C/-80°C upon receipt, aliquoting is necessary for multiple use. Avoid repeated freeze-thaw cycles. |
| Reconstitution | We recommend that this vial be briefly centrifuged prior to opening to bring the contents to the bottom. Please reconstitute protein in deionized sterile water to a concentration of 0.1-1.0 mg/mL. We recommend to add 5-50% of glycerol (final concentration) and aliquot for long-term storage at -20°C/-80°C. |

 Tel: 1-631-559-9269 1-516-512-3133

 Email: info@creative-biomart.com  Fax: 1-631-938-8127

 45-1 Ramsey Road, Shirley, NY 11967, USA

AA Sequence

ELIPDVPLSSTLYNIRSIGERPVLKAPAPKRQKCDHWSPCPPDTYAYRLLSGGGRDK
YAKICFEDEVLIGEKTGNVARGINIAVVNYETGKVIATKYFDMYEGDNSGPMKFIQS
TPSKSLLFMVTHDDGSSKLKAQAKDAIEALGSKEIKNMKFRSSWVFVAAKGFELPSEI
EREKINHSDQSRNRYAGWPAEIQIEGCIPKGLR

GENE INFORMATION

Gene Name Fam3b family with sequence similarity 3, member B [*Mus musculus*]

Official Symbol Fam3b

Synonyms

FAM3B; family with sequence similarity 3, member B; protein FAM3B; pancreatic-derived factor; cytokine-like protein 2-21; 2-21; ORF9; Pander; D16Jhu19e; 9030624C24Rik;

Gene ID 52793

mRNA Refseq NM_020622

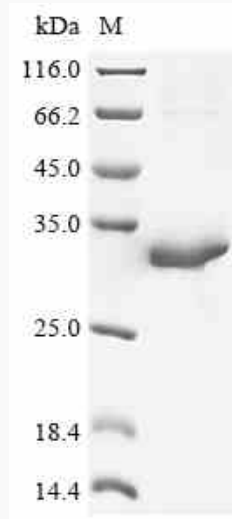
Protein Refseq NP_065647

 Tel: 1-631-559-9269 1-516-512-3133

 Email: info@creative-biomart.com  Fax: 1-631-938-8127

 45-1 Ramsey Road, Shirley, NY 11967, USA

SDS-PAGE



 Tel: 1-631-559-9269 1-516-512-3133

 Email: info@creative-biomart.com  Fax: 1-631-938-8127

 45-1 Ramsey Road, Shirley, NY 11967, USA