

Recombinant Rat Fbln5 protein, His-tagged

Cat. No. Fbln5-7900R Lot. No. (See product label)

SPECIFICATION

Product Overview	Recombinant Rat Fbln5 aa. (Tyr277~Phe448 (Accession # Q9WVH8)) fused with N-terminal His tag was produced in E. coli cells.
Species	Rat
Source	E.coli
ProteinLength	Tyr277~Phe448
Description	May play a role in vascular growth and maturation during development and in lesions of injured vessels.
Form	Freeze-dried powder
Molecular Mass	Predicted Molecular Mass: 21.3kDa
Endotoxin	<1.0EU per 1ug (determined by the LAL method)
Purity	>95%
Characteristic	The isoelectric point is 6.2.
Applications	SDS-PAGE; WB; ELISA; IP
Stability	The thermal stability is described by the loss rate of the target protein. The loss rate

 Tel: 1-631-559-9269 1-516-512-3133

 Email: info@creative-biomart.com  Fax: 1-631-938-8127

 45-1 Ramsey Road, Shirley, NY 11967, USA

was determined by accelerated thermal degradation test, that is, incubate the protein at 37°C for 48h, and no obvious degradation and precipitation were observed. (Referring from China Biological Products Standard, which was calculated by the Arrhenius equation.) The loss of this protein is less than 5% within the expiration date under appropriate storage condition.

Storage	Avoid repeated freeze/thaw cycles. Store at 2-8°C for one month. Aliquot and store at -80°C for 12 months.
Storage Buffer	Supplied as lyophilized form in PBS, pH7.4, containing 5% sucrose, 0.01% sarcosyl.
Reconstitution	Reconstitute in sterile PBS, pH7.2-pH7.4.

GENE INFORMATION

Gene Name	Fbln5 fibulin 5 [<i>Rattus norvegicus</i> (Norway rat)]
Official Symbol	Fbln5
Synonyms	Fbln5; fibulin 5; fibulin-5; EVEC; FIBL-5; dance; developmental arteries and neural crest EGF-like protein; embryonic vascular EGF repeat-containing protein
Gene ID	29158
mRNA Refseq	NM_019153.3
Protein Refseq	NP_062026.2
UniProt ID	Q9WVH8

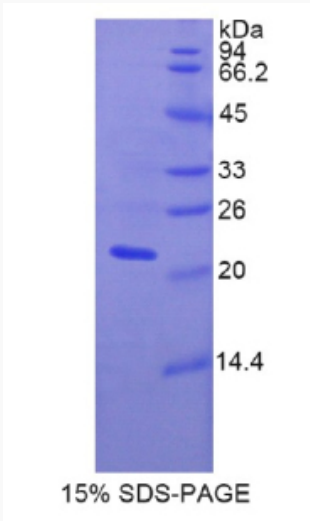
 Tel: 1-631-559-9269 1-516-512-3133

 Email: info@creative-biomart.com  Fax: 1-631-938-8127

 45-1 Ramsey Road, Shirley, NY 11967, USA



SDS-PAGE



Tel: 1-631-559-9269 1-516-512-3133

Email: info@creative-biomart.com Fax: 1-631-938-8127

45-1 Ramsey Road, Shirley, NY 11967, USA