

Recombinant Mouse Fc ϵ 1a protein, His-tagged

Cat. No. Fc ϵ 1a-1472M Lot. No. (See product label)

SPECIFICATION

| | |
|-------------------------|--|
| Product Overview | Recombinant Mouse Fc ϵ 1a protein(Ala24~Gln204), fused with N-terminal His Tag, was expressed in E. coli. |
| Species | Mouse |
| Source | E.coli |
| ProteinLength | Ala24~Gln204 |
| Tag | N-His |
| Form | PBS, pH7.4, containing 0.01% SKL, 5% Trehalose. |
| Molecular Mass | 25kDa |
| Endotoxin | <1.0EU per 1 μ g (determined by the LAL method) |
| Purity | > 97% |
| Storage | Avoid repeated freeze/thaw cycles. Store at 2-8°C for one month. Aliquot and store at -80°C for 12 months. |
| Reconstitution | Reconstitute in 10mM PBS (pH7.4) to a concentration of 0.1-1.0 mg/mL. Do not vortex. |

 Tel: 1-631-559-9269 1-516-512-3133

 Email: info@creative-biomart.com  Fax: 1-631-938-8127

 45-1 Ramsey Road, Shirley, NY 11967, USA

GENE INFORMATION

Gene Name Fcεr1a Fc receptor, IgE, high affinity I, alpha polypeptide [*Mus musculus*]

Official Symbol [Fcεr1a](#)

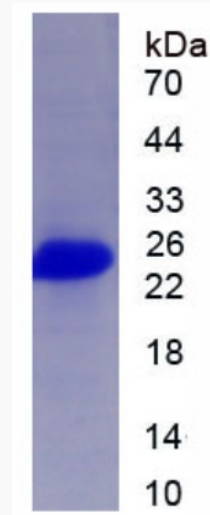
Synonyms FCER1A; Fc receptor, IgE, high affinity I, alpha polypeptide; high affinity immunoglobulin epsilon receptor subunit alpha; fc-epsilon RI-alpha; igE Fc receptor subunit alpha; FcεRI; Fce1a; Fcr-5; fcepsilonri

Gene ID [14125](#)

mRNA Refseq [NM_010184](#)

Protein Refseq [NP_034314](#)

SDS-PAGE



 Tel: 1-631-559-9269 1-516-512-3133

 Email: info@creative-biomart.com  Fax: 1-631-938-8127

 45-1 Ramsey Road, Shirley, NY 11967, USA