

## Recombinant Human FcγR3A protein, His-tagged

Cat. No. FcγR3A-3280H Lot. No. (See product label)

### SPECIFICATION

<b>Product Overview</b>	Recombinant Human FcγR3A protein(Gly17~Gln208), fused with N-terminal His Tag, was expressed in E.coli.
<b>Species</b>	Human
<b>Source</b>	E.coli
<b>ProteinLength</b>	Gly17~Gln208
<b>Form</b>	PBS, pH7.4, containing 0.01% SKL, 1mM DTT, 5% Trehalose and Proclin300.
<b>Molecular Mass</b>	27kDa
<b>Endotoxin</b>	<1.0EU per 1g (determined by the LAL method)
<b>Purity</b>	> 90%
<b>Storage</b>	Avoid repeated freeze/thaw cycles. Store at 2-8°C for one month. Aliquot and store at -80°C for 12 months.
<b>Reconstitution</b>	Reconstitute in 10mM PBS (pH7.4) to a concentration of 0.1-1.0 mg/mL. Do not vortex.

### GENE INFORMATION

 Tel: 1-631-559-9269 1-516-512-3133

 Email: [info@creative-biomart.com](mailto:info@creative-biomart.com)  Fax: 1-631-938-8127

 45-1 Ramsey Road, Shirley, NY 11967, USA

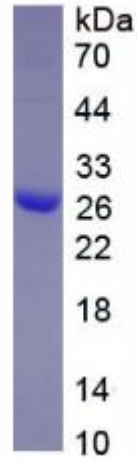
<b>Gene Name</b>	FCGR3A Fc fragment of IgG, low affinity IIIa, receptor (CD16a) [ Homo sapiens ]
<b>Official Symbol</b>	FcgR3A
<b>Synonyms</b>	FCGR3A; Fc fragment of IgG, low affinity IIIa, receptor (CD16a); Fc fragment of IgG, low affinity IIIa, receptor for (CD16) , FCG3, FCGR3; low affinity immunoglobulin gamma Fc region receptor III-A; CD16; CD16a; FcgammaRIIIA; CD16a antigen; fc-gamma RIII; Fc-gamma RIIIa; Fc-gamma RIII-alpha; igG Fc receptor III-2; Fc gamma receptor III-A; Fc-gamma receptor IIIb (CD16); neutrophil-specific antigen NA; Fc-gamma receptor III-2 (CD 16); immunoglobulin G Fc receptor III; Fc fragment of IgG, low affinity III, receptor for (CD16); FCG3; CD16A; FCGR3; IGFR3; FCR-10; FCRIII; FCGRIII; FCRIIIA;
<b>Gene ID</b>	2214
<b>mRNA Refseq</b>	NM_000569
<b>Protein Refseq</b>	NP_000560
<b>MIM</b>	146740
<b>UniProt ID</b>	P08637

 Tel: 1-631-559-9269 1-516-512-3133

 Email: [info@creative-biomart.com](mailto:info@creative-biomart.com)  Fax: 1-631-938-8127

 45-1 Ramsey Road, Shirley, NY 11967, USA

SDS-PAGE



 Tel: 1-631-559-9269 1-516-512-3133

 Email: [info@creative-biomart.com](mailto:info@creative-biomart.com)  Fax: 1-631-938-8127

 45-1 Ramsey Road, Shirley, NY 11967, USA