

## Recombinant Mouse Fcrl1 Protein (Ala17-Ser219), C-His tagged

Cat. No. Fcrl1-5760M    Lot. No. (See product label)

### SPECIFICATION

<b>Product Overview</b>	Recombinant mouse FCRL1 (Ala17-Ser219) fused with the C-terminal His tag was expressed in mammalian cells.
<b>Species</b>	Mouse
<b>Source</b>	Mammalian Cells
<b>ProteinLength</b>	Ala17-Ser219
<b>Form</b>	Lyophilized powder/frozen liquid
<b>Molecular Mass</b>	22.33 kDa
<b>Purity</b>	> 90 % as determined by SDS-PAGE
<b>Notes</b>	For research use only.
<b>Storage</b>	Use a manual defrost freezer and avoid repeated freeze thaw cycles. Store at 2 to 8 centigrade for one week. Store at -20 to -80 centigrade for twelve months from the date of receipt.
<b>Storage Buffer</b>	Supplied as solution form in PBS or lyophilized from PBS.
<b>Reconstitution</b>	Reconstitute in sterile water for a stock solution.

 Tel: 1-631-559-9269    1-516-512-3133

 Email: [info@creative-biomart.com](mailto:info@creative-biomart.com)     Fax: 1-631-938-8127

 45-1 Ramsey Road, Shirley, NY 11967, USA

**Shipping** They are shipped out with dry ice/blue ice unless customers require otherwise.

## GENE INFORMATION

**Gene Name** [Fcr1l Fc receptor-like 1 \[ Mus musculus \(house mouse\) \]](#)

**Official Symbol** [Fcr1l](#)

**Synonyms** FCRL1; Fc receptor-like 1; Fc receptor-like protein 1; fcR-like protein 1; BXMAS1-like protein 1; IFGP family protein 1; fc receptor homolog 1; BXMAS1-like protein 1b; Bxmh1; Fcrh1; Ifgp1; Bxmas1; Bxmh1b; Fcrh1l; Fcrh1s; A230020G22Rik;

**Gene ID** [229499](#)

**mRNA Refseq** [NM\\_001136236](#)

**Protein Refseq** [NP\\_001129708](#)

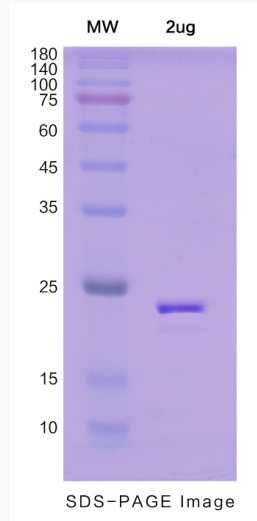
**UniProt ID** [Q8R4Y0](#)

 Tel: 1-631-559-9269 1-516-512-3133

 Email: [info@creative-biomart.com](mailto:info@creative-biomart.com)  Fax: 1-631-938-8127

 45-1 Ramsey Road, Shirley, NY 11967, USA

**SDS-PAGE**



 Tel: 1-631-559-9269 1-516-512-3133

 Email: [info@creative-biomart.com](mailto:info@creative-biomart.com)  Fax: 1-631-938-8127

 45-1 Ramsey Road, Shirley, NY 11967, USA