

## Recombinant Rat Fgf10 protein, His & GST-tagged

Cat. No. Fgf10-1927R Lot. No. (See product label)

### SPECIFICATION

<b>Product Overview</b>	Recombinant Rat Fgf10 aa. (Gln37~Ser215 (Accession # P70492)) fused with N-terminal His & GST tag was produced in E. coli cells.
<b>Species</b>	Rat
<b>Source</b>	E.coli
<b>ProteinLength</b>	Gln37~Ser215
<b>Description</b>	Binds the KGFR receptor, a splice variant of FGFR-2; may contribute to tissue regeneration and angiogenesis after acute pancreatitis.
<b>Form</b>	Freeze-dried powder
<b>Molecular Mass</b>	Predicted Molecular Mass: 47.1kDa.
<b>Endotoxin</b>	<1.0EU per 1ug (determined by the LAL method)
<b>Purity</b>	>90%
<b>Characteristic</b>	The isoelectric point is 9.2.
<b>Applications</b>	SDS-PAGE; WB; ELISA; IP.
<b>Stability</b>	The thermal stability is described by the loss rate of the target protein. The loss rate

 Tel: 1-631-559-9269 1-516-512-3133

 Email: [info@creative-biomart.com](mailto:info@creative-biomart.com)  Fax: 1-631-938-8127

 45-1 Ramsey Road, Shirley, NY 11967, USA

was determined by accelerated thermal degradation test, that is, incubate the protein at 37°C for 48h, and no obvious degradation and precipitation were observed. (Referring from China Biological Products Standard, which was calculated by the Arrhenius equation.) The loss of this protein is less than 5% within the expiration date under appropriate storage condition.

**Storage** Avoid repeated freeze/thaw cycles. Store at 2-8°C for one month. Aliquot and store at -80°C for 12 months.

**Storage Buffer** Supplied as lyophilized form in 10mM PBS, pH7.4, containing 1mM DTT, 5% trehalose, 0.01% sarcosyl and preservative.

**Reconstitution** Reconstitute in sterile ddH<sub>2</sub>O.

## GENE INFORMATION

**Gene Name** [Fgf10 fibroblast growth factor 10 \[ Rattus norvegicus \(Norway rat\) \]](#)

**Official Symbol** [Fgf10](#)

**Synonyms** MYL3; myosin light chain 3; CMH8; VLC1; VLCl; MLC1V; MLC1SB; MLC-IV/sb; CMLC1; cardiac myosin light chain 1; myosin light chain 1, slow-twitch muscle B/ventricular isoform; myosin, light chain 3, alkali; ventricular, skeletal, slow; myosin, light polypeptide 3, alkali; ventricular, skeletal, slow; ventricular myosin alkali light chain; ventricular myosin light chain 1; ventricular/slow twitch myosin alkali light chain

**Gene ID** [25443](#)

**mRNA Refseq** [NM\\_012951.1](#)

**Protein Refseq** [NP\\_037083.1](#)

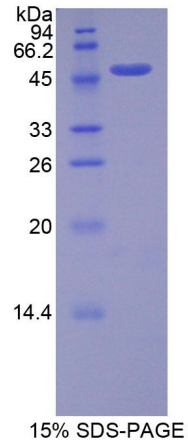
 Tel: 1-631-559-9269 1-516-512-3133

 Email: [info@creative-biomart.com](mailto:info@creative-biomart.com)  Fax: 1-631-938-8127

 45-1 Ramsey Road, Shirley, NY 11967, USA

UniProt ID

P70492



SDS-PAGE

 Tel: 1-631-559-9269 1-516-512-3133

 Email: [info@creative-biomart.com](mailto:info@creative-biomart.com)  Fax: 1-631-938-8127

 45-1 Ramsey Road, Shirley, NY 11967, USA