

Recombinant Mouse Fgf2 Protein (Met1-Ser154)

Cat. No. Fgf2-5419M Lot. No. (See product label)

SPECIFICATION

Product Overview	Recombinant mouse FGF2 (Met1-Ser154) without tag was expressed in E. coli.
Species	Mouse
Source	E.coli
ProteinLength	Met1-Ser154
Description	Enables growth factor activity. Involved in stem cell development. Acts upstream of or within several processes, including animal organ development; positive regulation of macromolecule metabolic process; and positive regulation of signal transduction. Located in extracellular space. Is expressed in several structures, including alimentary system; central nervous system; extraembryonic component; genitourinary system; and sensory organ. Human ortholog (s) of this gene implicated in several diseases, including Parkinsonism; corneal neovascularization; diabetic neuropathy; gastric ulcer; and impotence. Orthologous to human FGF2 (fibroblast growth factor 2).
Form	Lyophilized powder/frozen liquid
Molecular Mass	16.94 kDa
Purity	> 90 % as determined by SDS-PAGE
Notes	For research use only.

 Tel: 1-631-559-9269 1-516-512-3133

 Email: info@creative-biomart.com  Fax: 1-631-938-8127

 45-1 Ramsey Road, Shirley, NY 11967, USA

Storage Use a manual defrost freezer and avoid repeated freeze thaw cycles. Store at 2 to 8 centigrade for one week. Store at -20 to -80 centigrade for twelve months from the date of receipt.

Storage Buffer Supplied as solution form in PBS or lyophilized from PBS.

Reconstitution Reconstitute in sterile water for a stock solution.

Shipping They are shipped out with dry ice/blue ice unless customers require otherwise.

GENE INFORMATION

Gene Name Fgf2 fibroblast growth factor 2 [Mus musculus (house mouse)]

Official Symbol Fgf2

Synonyms Fgf2; fibroblast growth factor 2; Fgfb; bFGF; Fgf-2; Fgf2a; fibroblast growth factor 2; HBGF-2; basic fibroblast growth factor; fibroblast growth factor 2a; heparin-binding growth factor 2

Gene ID 14173

mRNA Refseq NM_008006

Protein Refseq NP_032032

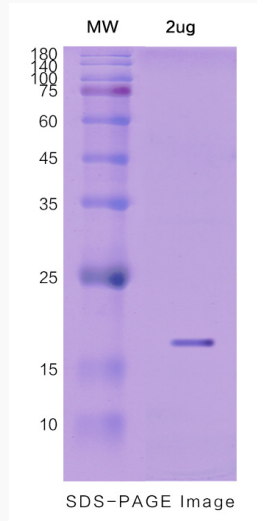
UniProt ID P15655

 Tel: 1-631-559-9269 1-516-512-3133

 Email: info@creative-biomart.com  Fax: 1-631-938-8127

 45-1 Ramsey Road, Shirley, NY 11967, USA

SDS-PAGE



 Tel: 1-631-559-9269 1-516-512-3133

 Email: info@creative-biomart.com  Fax: 1-631-938-8127

 45-1 Ramsey Road, Shirley, NY 11967, USA