

Recombinant Rat Fgf2 Protein (Ala11-Ser154)

Cat. No. Fgf2-6841R **Lot. No.** (See product label)

SPECIFICATION

Product Overview	Recombinant rat FGF2 (Ala11-Ser154) without tag was expressed in E. coli.
Species	Rat
Source	E.coli
ProteinLength	Ala11-Ser154
Description	Enables fibroblast growth factor receptor binding activity. Involved in several processes, including angiogenesis involved in coronary vascular morphogenesis; paracrine signaling; and positive regulation of cell population proliferation. Acts upstream of or within fibroblast growth factor receptor signaling pathway. Located in cytoplasm; extracellular space; and nucleus. Used to study pulmonary hypertension. Biomarker of bladder disease; decubitus ulcer; diabetic retinopathy; hypertension; and retinal vein occlusion. Human ortholog (s) of this gene implicated in several diseases, including Parkinsonism; corneal neovascularization; diabetic neuropathy; gastric ulcer; and impotence. Orthologous to human FGF2 (fibroblast growth factor 2).
Form	Lyophilized powder/frozen liquid
Molecular Mass	15.84 kDa
Purity	> 90 % as determined by SDS-PAGE
Notes	For research use only.

 Tel: 1-631-559-9269 1-516-512-3133

 Email: info@creative-biomart.com  Fax: 1-631-938-8127

 45-1 Ramsey Road, Shirley, NY 11967, USA

Storage	Use a manual defrost freezer and avoid repeated freeze thaw cycles. Store at 2 to 8 centigrade for one week. Store at -20 to -80 centigrade for twelve months from the date of receipt.
Storage Buffer	Supplied as solution form in PBS or lyophilized from PBS.
Reconstitution	Reconstitute in sterile water for a stock solution.
Shipping	They are shipped out with dry ice/blue ice unless customers require otherwise.

GENE INFORMATION

Gene Name	Fgf2 fibroblast growth factor 2 [<i>Rattus norvegicus</i> (Norway rat)]
Official Symbol	Fgf2
Synonyms	Fgf2; fibroblast growth factor 2; Fgfb; bFGF; Fgf-2; Fgf2a; fibroblast growth factor 2; HBGF-2; basic fibroblast growth factor; fibroblast growth factor 2a; heparin-binding growth factor 2
Gene ID	54250
mRNA Refseq	NM_019305
Protein Refseq	NP_062178
UniProt ID	P13109

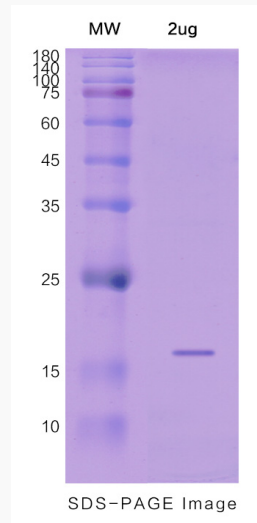
 Tel: 1-631-559-9269 1-516-512-3133

 Email: info@creative-biomart.com  Fax: 1-631-938-8127

 45-1 Ramsey Road, Shirley, NY 11967, USA



SDS-PAGE



Tel: 1-631-559-9269 1-516-512-3133

Email: info@creative-biomart.com Fax: 1-631-938-8127

45-1 Ramsey Road, Shirley, NY 11967, USA