

## Recombinant Mouse Fgf21 protein, His-tagged

**Cat. No.** Fgf21-574M    **Lot. No.** (See product label)

### SPECIFICATION

<b>Product Overview</b>	Recombinant Mouse Fgf21 protein(Q9NSA1-1)(His29-Ser210), fused with N-terminal His tag, was expressed in HEK293.
<b>Species</b>	Mouse
<b>Source</b>	HEK293
<b>ProteinLength</b>	His29-Ser210
<b>Tag</b>	N-His
<b>Form</b>	Supplied as 0.22µm filtered solution in PBS (pH 7.4).
<b>Bio-activity</b>	Mouse FGF21, His Tag immobilized on CM5 Chip can bind Human Beta Klotho, His Tag with an affinity constant of 41.50 nM as determined in SPR assay (Biacore T200).
<b>Molecular Mass</b>	The protein has a predicted MW of 21 kDa. Due to glycosylation, the protein migrates to 25-30 kDa based on Tris-Bis PAGE result.
<b>Endotoxin</b>	Less than 1EU per µg by the LAL method.
<b>Purity</b>	> 95% as determined by Tris-Bis PAGE;> 95% as determined by HPLC
<b>Storage</b>	Valid for 12 months from date of receipt when stored at -80°C. Recommend to aliquot

 Tel: 1-631-559-9269    1-516-512-3133

 Email: [info@creative-biomart.com](mailto:info@creative-biomart.com)     Fax: 1-631-938-8127

 45-1 Ramsey Road, Shirley, NY 11967, USA

the protein into smaller quantities for optimal storage. Please do not repeated freeze-thaw cycles.

**Reconstitution**

It is recommended that sterile water be added to the vial to prepare a stock solution of 0.2 ug/ul. Centrifuge the vial at 4°C before opening to recover the entire contents.

**GENE INFORMATION**

**Gene Name** Fgf21 fibroblast growth factor 21 [ Mus musculus ]

**Official Symbol** Fgf21

**Synonyms** FGF21; fibroblast growth factor 21; FGF-21;

**Gene ID** 56636

**mRNA Refseq** NM\_020013

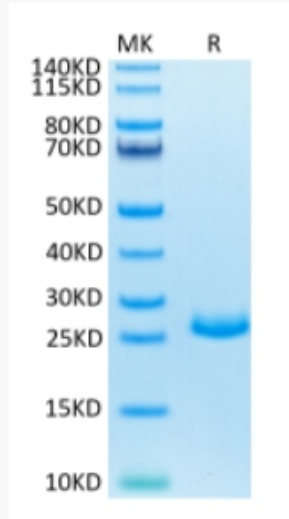
**Protein Refseq** NP\_064397

 Tel: 1-631-559-9269 1-516-512-3133

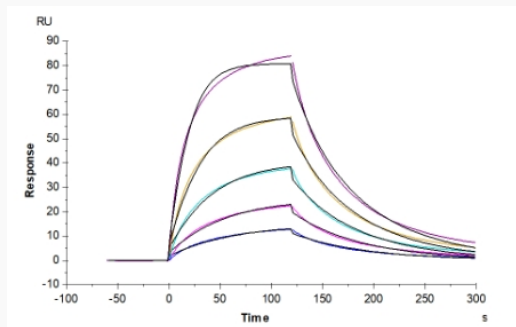
 Email: [info@creative-biomart.com](mailto:info@creative-biomart.com)  Fax: 1-631-938-8127

 45-1 Ramsey Road, Shirley, NY 11967, USA

**Tris-Bis PAGE**



**SPR Data**



 Tel: 1-631-559-9269 1-516-512-3133

 Email: [info@creative-biomart.com](mailto:info@creative-biomart.com)  Fax: 1-631-938-8127

 45-1 Ramsey Road, Shirley, NY 11967, USA