

Recombinant Rat Fgfr1 protein, His & S-tagged

Cat. No. Fgfr1-1800R Lot. No. (See product label)

SPECIFICATION

Product Overview	Recombinant Rat Fgfr1 aa. (Met1~Glu89) fused with N-terminal His & S tag was produced in E. coli cells.
Species	Rat
Source	E.coli
ProteinLength	Met1~Glu89
Description	Proportion of transmembrane and soluble extracellular isoforms may modulate fibroblast growth factor signaling; plays a role in regulation of neuronal cell proliferation.
Form	Freeze-dried powder
Molecular Mass	19kDa as determined by SDS-PAGE reducing conditions.
Endotoxin	<1.0EU per 1ug (determined by the LAL method)
Purity	>95%
Characteristic	The isoelectric point is 5.5.
Applications	SDS-PAGE; WB; ELISA; IP.

 Tel: 1-631-559-9269 1-516-512-3133

 Email: info@creative-biomart.com  Fax: 1-631-938-8127

 45-1 Ramsey Road, Shirley, NY 11967, USA

Stability	The thermal stability is described by the loss rate of the target protein. The loss rate was determined by accelerated thermal degradation test, that is, incubate the protein at 37°C for 48h, and no obvious degradation and precipitation were observed. (Referring from China Biological Products Standard, which was calculated by the Arrhenius equation.) The loss of this protein is less than 5% within the expiration date under appropriate storage condition.
Storage	Avoid repeated freeze/thaw cycles. Store at 2-8°C for one month. Aliquot and store at -80°C for 12 months.
Storage Buffer	Supplied as lyophilized form in 20mM Tris, 150mM NaCl, pH8.0, containing 1mM EDTA, 1mM DTT, 0.01% sarcosyl, 5% trehalose, and preservative.
Reconstitution	Reconstitute in sterile ddH ₂ O.

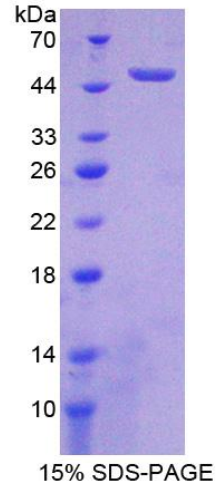
GENE INFORMATION

Gene Name	Fgfr1 Fibroblast growth factor receptor 1 [Rattus norvegicus (Norway rat)]
Official Symbol	Fgfr1
Synonyms	Fbln5; fibulin 5; fibulin-5; EVEC; FIBL-5; dance; developmental arteries and neural crest EGF-like protein; embryonic vascular EGF repeat-containing protein
Gene ID	79114
mRNA Refseq	NM_024146.1
Protein Refseq	NP_077060.1
UniProt ID	Q04589

 Tel: 1-631-559-9269 1-516-512-3133

 Email: info@creative-biomart.com  Fax: 1-631-938-8127

 45-1 Ramsey Road, Shirley, NY 11967, USA



SDS-PAGE

Tel: 1-631-559-9269 1-516-512-3133

Email: info@creative-biomart.com Fax: 1-631-938-8127

45-1 Ramsey Road, Shirley, NY 11967, USA