

Active Recombinant Mouse FMS-like tyrosine kinase 1 Protein, Fc tagged

Cat. No. Flt1-12M **Lot. No.** (See product label)

SPECIFICATION

| | |
|-------------------------|--|
| Product Overview | Recombinant mouse VEGFR1/Flt-1, fused to hlgG-tag at C-terminus, was expressed in HEK293 cell and purified by using conventional chromatography techniques. |
| Species | Mouse |
| Source | HEK293 |
| ProteinLength | 23-759aa |
| Description | <p>Enables identical protein binding activity and vascular endothelial growth factor receptor activity. Involved in several processes, including blood vessel morphogenesis; embryonic morphogenesis; and hyaloid vascular plexus regression. Acts upstream of or within several processes, including angiogenesis; positive regulation of hematopoietic progenitor cell differentiation; and post-embryonic camera-type eye morphogenesis. Located in extracellular space and nucleus. Is expressed in several structures, including alimentary system; cardiovascular system; central nervous system; extraembryonic component; and genitourinary system. Human ortholog(s) of this gene implicated in Kuhnt-Junius degeneration; bronchopulmonary dysplasia; diabetic retinopathy; and pre-eclampsia. Orthologous to human FLT1 (fms related receptor tyrosine kinase 1).</p> |
| Tag | Fc |
| Form | Liquid |

 Tel: 1-631-559-9269 1-516-512-3133

 Email: info@creative-biomart.com  Fax: 1-631-938-8127

 45-1 Ramsey Road, Shirley, NY 11967, USA

| | |
|-----------------------|--|
| Molecular Mass | 108.9 kDa (970aa) |
| AA Sequence | <p>YGSGLKLVPELSLKGTTQHVMQAGQTLFLKCRGEEAAHSWSLPTTVSQEDKRLSITP PSACGRDNRQFCSTLTLDTAQANHTGLYTCRYLPTSTSKKKAESSIYIFVSDAGSP FIEMHTDIPKLVHMTEGRQLIIPCRVTSPNVTVTLKKFPFDLTPDGQRITWDSRRGFI IANATYKEIGLLNCEATVNGHLYQNTNYLTHRQTNTILDVQIRPPSPVRLHGGQTLVLNC TATTELNTRVQMSWNYPGKATKRASIRQRIDRSHSHNNVFHSLKINNVESRDKGLY TCRVKSGSSFQSFNTSVHVEYKGFISVKHRKQPVQETTAGRRSYRLSMKVKAFPSP EIVWLKDGSPATLKSARYLVHGYSLIKDVTTEDAGDYTILLGIKQSRLFKNLTATLIVN VKPQIYEKSVSSLPSPLYPLGSRQVLTCTVYGIPRPTITWLWHPCHHNHSKERYDF CTENEESFILDPSSNLGNRIESISQRMTVIEGTNKTVSTLVVADSQTPGIYSCRAFNKI GTVERNIKFYVTDVPNGFHVSLKMPAEGEDLKLSCVVKFLYRDITWILLRVTNNRT MHHSISKQKMATTQDYSITLNLVIKNSLEDSGTYACRARNIYTGEDILRKTEVLVRD SEAPHLLQNLSDYEVSSISGSTLDCQARGVPAPQITWFKNNHKKIQQEPGIILGPGNST LFIERVTEEDEGVYRCRATNQGAVESAAYLTVQGTSDKSNLE</p> |
| Bio-Activity | Measured by its ability to inhibit proliferation using HUVEC human umbilical vein endothelial cells in the presence of Human VEGF165. The ED50 range \leq 50 ng/mL. |
| Endotoxin | < 1 EU/ μ g by LAL. |
| Purity | > 85% by SDS-PAGE |
| Applications | SDS-PAGE, Bioactivity |
| Storage | Can be stored at +2 to +8 centigrade for 1 week. For long term storage, aliquot and store at -20 to -80 centigrade. Avoid repeated freezing and thawing cycles. |
| Storage Buffer | Phosphate-Buffered Saline (pH 7.4) containing 10% glycerol |

 Tel: 1-631-559-9269 1-516-512-3133

 Email: info@creative-biomart.com  Fax: 1-631-938-8127

 45-1 Ramsey Road, Shirley, NY 11967, USA

Concentration 1 mg/mL (determined by Absorbance at 280nm)

Reference

1. Peters, K.G. et al. (1993) Proc. Natl. Acad. Sci. USA 90:8915-8919.
2. Kendall R.L., et al., (1993), Natl. Acad. Sci. U.S.A. 90:10705-10709.
3. Herley M.T., et al., (1999), Biochem. Biophys. Res. Commun. 262:731-738.

GENE INFORMATION

Gene Name Flt1 FMS-like tyrosine kinase 1 [*Mus musculus* (house mouse)]

Official Symbol Flt1

Synonyms

FLT1; FMS-like tyrosine kinase 1; vascular endothelial growth factor receptor 1; embryonic receptor kinase 2; tyrosine-protein kinase receptor FLT; vascular permeability factor receptor; vascular endothelial growth factor receptor-1; Flt-1; sFlt1; VEGFR1; VEGFR-1; AI323757

Gene ID 14254

mRNA Refseq NM_010228

Protein Refseq NP_034358

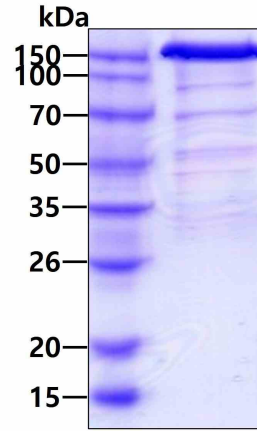
UniProt ID P35969

 Tel: 1-631-559-9269 1-516-512-3133

 Email: info@creative-biomart.com  Fax: 1-631-938-8127

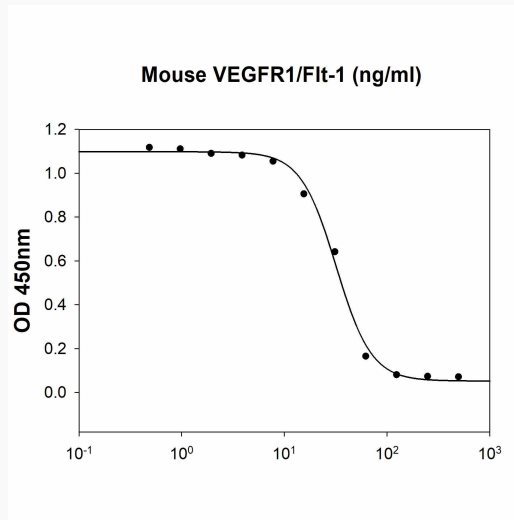
 45-1 Ramsey Road, Shirley, NY 11967, USA

SDS-PAGE




3 μ g by SDS-PAGE under reducing condition and visualized by coomassie blue stain.


Biological Activity



Mouse VEGFR1/Flt-1 inhibit proliferation of the HUVEC human umbilical vein endothelial cells in the presence of Human VEGF165. The ED50 range \leq 50 ng/mL.

 Tel: 1-631-559-9269 1-516-512-3133

 Email: info@creative-biomart.com  Fax: 1-631-938-8127

 45-1 Ramsey Road, Shirley, NY 11967, USA