

Recombinant Mouse Flt1 protein, His-tagged

Cat. No. Flt1-1838M Lot. No. (See product label)

SPECIFICATION

Product Overview	Recombinant Mouse Flt1 aa. (Ser27~Val329) fused with N-terminal His tag was produced in E. coli cells.
Species	Mouse
Source	E.coli
ProteinLength	Ser27~Val329
Form	Freeze-dried powder
Molecular Mass	37kDa as determined by SDS-PAGE reducing conditions.
Endotoxin	<1.0EU per 1ug (determined by the LAL method)
Purity	>98%
Characteristic	The isoelectric point is 9.7.
Applications	SDS-PAGE; WB; ELISA; IP; CoIP; Reporter Assays; Purification; Amine Reactive Labeling.
Stability	The thermal stability is described by the loss rate of the target protein. The loss rate was determined by accelerated thermal degradation test, that is, incubate the protein at 37°C for 48h, and no obvious degradation and precipitation were observed.

 Tel: 1-631-559-9269 1-516-512-3133

 Email: info@creative-biomart.com  Fax: 1-631-938-8127

 45-1 Ramsey Road, Shirley, NY 11967, USA

(Referring from China Biological Products Standard, which was calculated by the Arrhenius equation.) The loss of this protein is less than 5% within the expiration date under appropriate storage condition.

Storage

Avoid repeated freeze/thaw cycles. Store at 2-8°C for one month. Aliquot and store at -80°C for 12 months.

Concentration

200µg/mL

Storage Buffer

PBS, pH7.4, containing 1mM DTT, 5% trehalose, 0.01% sarcosyl and Proclin300.

Reconstitution

Reconstitute in PBS (pH7.4) to a concentration of 0.1-1.0 mg/mL. Do not vortex.

GENE INFORMATION

Gene Name

[Flt1 FMS-like tyrosine kinase 1 \[Mus musculus \(house mouse\) \]](#)

Official Symbol

[Flt1](#)

Synonyms

Lipa; lipase A, lysosomal acid type; LAL; Lip1; Chole; Chole2; lysosomal acid lipase/cholesteryl ester hydrolase; Cholesterol esterase (pancreatic) see D3Wox12 D3Wox13 D3Wox26 and D3Mgh25; acid cholesteryl ester hydrolase; cholesteryl esterase; lipase A, lysosomal acid, cholesterol esterase; lysosomal acid lipase 1; lysosomal acid lipase A; pancreatic cholesterol esterase; sterol esterase

Gene ID

[14254](#)

mRNA Refseq

[NM_010228.3](#)

Protein Refseq

[NP_034358.2](#)

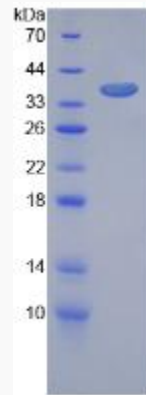
 Tel: 1-631-559-9269 1-516-512-3133

 Email: info@creative-biomart.com  Fax: 1-631-938-8127

 45-1 Ramsey Road, Shirley, NY 11967, USA

UniProt ID

P35969



SDS-PAGE

 Tel: 1-631-559-9269 1-516-512-3133

 Email: info@creative-biomart.com  Fax: 1-631-938-8127

 45-1 Ramsey Road, Shirley, NY 11967, USA