

## Recombinant Mouse FMS-like Tyrosine Kinase 3 Ligand

**Cat. No.** Flt3l-188M    **Lot. No.** (See product label)

### SPECIFICATION

<b>Species</b>	Mouse
<b>Source</b>	Mammalian Cells
<b>Description</b>	<p>Fms-related tyrosine kinase 3 ligand (FLT3LG) is a hematopoietic four helical bundle cytokine. It is structurally homologous to stem cell factor (SCF) and colony stimulating factor 1 (CSF-1). In synergy with other growth factors, such as IL-7 and IL-3, Flt-3 ligand promotes long-term expansion and differentiation of human pro-B-cells. Flt3 ligand is a cytokine capable of inducing large numbers of dendritic cells that dramatically enhances the sensitivity of antigen-specific B and T cell responses to systemic injection of a soluble protein. Through a CD40-CD40 ligand-dependent mechanism Flt-3 Ligand influences the class of antibody produced and enables productive immune responses.</p>
<b>State Of Matter</b>	Lyophilized.
<b>Purity</b>	>97% by SDS Page and analyzed by silver stain.
<b>Endotoxin</b>	<1.0 EU/g as determined by the LAL method.
<b>Molecular Weight</b>	<p>The predicted molecular weight of Recombinant Mouse Flt3-Ligand is Mr 18 kDa. However, the actual molecular weight as observed by migration on SDS Page is Mr 18-32 kDa.</p>
<b>Storage And Stability</b>	This lyophilized protein is stable for six to twelve months when stored desiccated at -

 Tel: 1-631-559-9269    1-516-512-3133

 Email: [info@creative-biomart.com](mailto:info@creative-biomart.com)     Fax: 1-631-938-8127

 45-1 Ramsey Road, Shirley, NY 11967, USA



20°C to -70°C. After aseptic reconstitution, this protein may be stored at 2°C to 8°C for one month or at -20°C to -70°C in a manual defrost freezer. Avoid Repeated Freeze Thaw Cycles.

## GENE INFORMATION

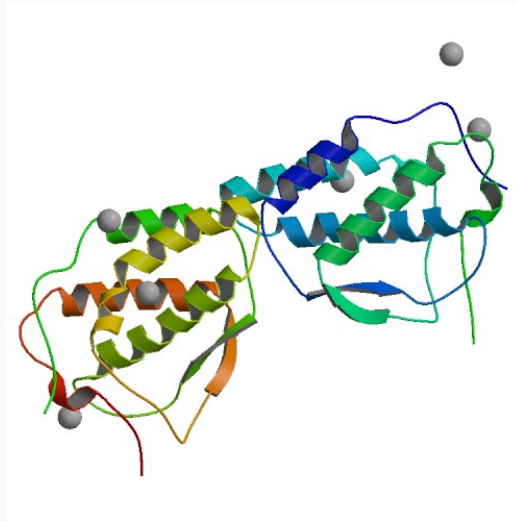
<b>Gene Name</b>	Flt3l FMS-like tyrosine kinase 3 ligand [ <i>Mus musculus</i> ]
<b>Synonyms</b>	Flt3l; FMS-like tyrosine kinase 3 ligand; Ly72L; Flt3lg; Flt3l
<b>Gene ID</b>	14256
<b>mRNA Refseq</b>	NM_013520
<b>Protein Refseq</b>	NP_038548
<b>UniProt ID</b>	P49772
<b>Chromosome Location</b>	7 B2-C; 7 23.0 cM
<b>Function</b>	cytokine activity; kinase activity; protein homodimerization activity; receptor tyrosine kinase binding; receptor tyrosine kinase binding

 Tel: 1-631-559-9269 1-516-512-3133

 Email: [info@creative-biomart.com](mailto:info@creative-biomart.com)  Fax: 1-631-938-8127

 45-1 Ramsey Road, Shirley, NY 11967, USA

PDB rendering based  
on 1ete.



 Tel: 1-631-559-9269 1-516-512-3133

 Email: [info@creative-biomart.com](mailto:info@creative-biomart.com)  Fax: 1-631-938-8127

 45-1 Ramsey Road, Shirley, NY 11967, USA