

## Recombinant Mouse Folh1 protein, His-tagged

**Cat. No.** Folh1-4533M    **Lot. No.** (See product label)

### SPECIFICATION

<b>Product Overview</b>	Recombinant Mouse Folh1 protein(O35409)(Lys45-Ala752), fused with N-terminal His tag, was expressed in HEK293.
<b>Species</b>	Mouse
<b>Source</b>	HEK293
<b>ProteinLength</b>	Lys45-Ala752
<b>Tag</b>	N-His
<b>Form</b>	Supplied as 0.22µm filtered solution in 50 MES,150mM NaCl (pH 6.0).
<b>Molecular Mass</b>	The protein has a predicted MW of 80.6 kDa. Due to glycosylation, the protein migrates to 90-110 kDa based on Tris-Bis PAGE result.
<b>Endotoxin</b>	Less than 1EU per µg by the LAL method.
<b>Purity</b>	> 95% as determined by Tris-Bis PAGE;> 95% as determined by HPLC
<b>Storage</b>	Valid for 12 months from date of receipt when stored at -80°C. Recommend to aliquot the protein into smaller quantities for optimal storage. Please do not repeated freeze-thaw cycles.
<b>Reconstitution</b>	It is recommended that sterile water be added to the vial to prepare a stock solution of

 Tel: 1-631-559-9269    1-516-512-3133

 Email: [info@creative-biomart.com](mailto:info@creative-biomart.com)     Fax: 1-631-938-8127

 45-1 Ramsey Road, Shirley, NY 11967, USA

0.2 ug/ul. Centrifuge the vial at 4°C before opening to recover the entire contents.

## GENE INFORMATION

**Gene Name** [Folh1 folate hydrolase \[ Mus musculus \]](#)

**Official Symbol** [Folh1](#)

**Synonyms**

FOLH1; folate hydrolase; glutamate carboxypeptidase 2; FGCP; mGCP; GCPII; NAALADase I; folate hydrolase 1; glutamate carboxypeptidase II; membrane glutamate carboxypeptidase; folypoly-gamma-glutamate carboxypeptidase; prostate-specific membrane antigen homolog; pteroylpoly-gamma-glutamate carboxypeptidase; N-acetylated-alpha-linked acidic dipeptidase I; GCP2; mopsm; MGC141397;

**Gene ID** [53320](#)

**mRNA Refseq** [NM\\_001159706](#)

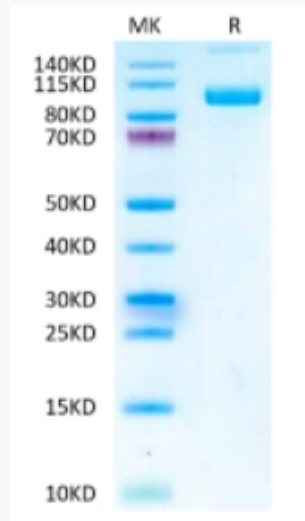
**Protein Refseq** [NP\\_001153178](#)

 Tel: 1-631-559-9269 1-516-512-3133

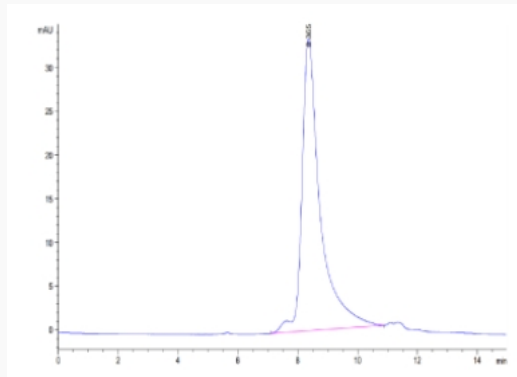
 Email: [info@creative-biomart.com](mailto:info@creative-biomart.com)  Fax: 1-631-938-8127

 45-1 Ramsey Road, Shirley, NY 11967, USA

**Tris-Bis PAGE**



**SEC-HPLC**



 Tel: 1-631-559-9269 1-516-512-3133

 Email: [info@creative-biomart.com](mailto:info@creative-biomart.com)  Fax: 1-631-938-8127

 45-1 Ramsey Road, Shirley, NY 11967, USA