

Recombinant Rat Fos1 protein, His & GST-tagged

Cat. No. Fos1-1623R **Lot. No.** (See product label)

SPECIFICATION

Product Overview	Recombinant Rat Fos1 aa. (Met1~Leu275 (Accession # P10158)) fused with N-terminal His & GST tag was produced in E. coli cells.
Species	Rat
Source	E.coli
ProteinLength	Met1~Leu275
Description	Protein, antigenically related to c-fos; involved in serum inducible cellular immediate-early transcriptional response.
Form	Freeze-dried powder
Molecular Mass	Predicted Molecular Mass: 62.5kDa
Endotoxin	<1.0EU per 1ug (determined by the LAL method)
Purity	>95%
Applications	SDS-PAGE; WB; ELISA; IP.
Stability	The thermal stability is described by the loss rate. The loss rate was determined by accelerated thermal degradation test, that is, incubate the protein at 37°C for 48h, and no obvious degradation and precipitation were observed. The loss rate is less

 Tel: 1-631-559-9269 1-516-512-3133

 Email: info@creative-biomart.com  Fax: 1-631-938-8127

 45-1 Ramsey Road, Shirley, NY 11967, USA

than 5% within the expiration date under appropriate storage condition.

Storage

Avoid repeated freeze/thaw cycles. Store at 2-8°C for one month. Aliquot and store at -80°C for 12 months.

Storage buffer

Supplied as lyophilized form in PBS, pH7.4, containing 5% sucrose, 0.01% sarcosyl.

Reconstitution

Reconstitute in sterile PBS, pH7.2-pH7.4.

Isoelectric Point

7

GENE INFORMATION

Gene Name

Fosl1 FOS like 1, AP-1 transcription factor subunit [*Rattus norvegicus* (Norway rat)]

Official Symbol

Fosl1

Synonyms

Fosl1; FOS like 1, AP-1 transcription factor subunit; Fra-1; fra-1; fos-related antigen 1; FOS like 1, AP-1 transcription factor subunit; fos-like antigen 1

Gene ID

25445

mRNA Refseq

NM_012953.1

Protein Refseq

NP_037085.1

UniProt ID

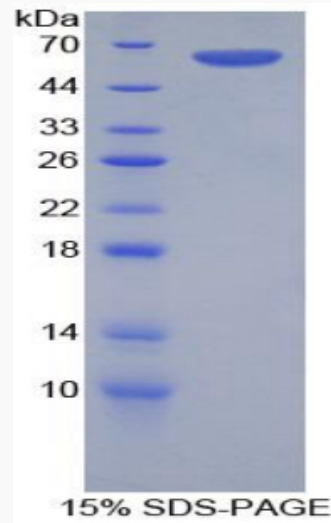
P10158

 Tel: 1-631-559-9269 1-516-512-3133

 Email: info@creative-biomart.com  Fax: 1-631-938-8127

 45-1 Ramsey Road, Shirley, NY 11967, USA

SDS-PAGE



 Tel: 1-631-559-9269 1-516-512-3133

 Email: info@creative-biomart.com  Fax: 1-631-938-8127

 45-1 Ramsey Road, Shirley, NY 11967, USA