

Recombinant RSV (A, rsb1734)(93% homologous with strain rsb1734) G Protein, His-tagged

Cat. No. G-291V Lot. No. (See product label)

SPECIFICATION

Product Overview	Recombinant RSV (A, rsb1734)(93% homologous with strain rsb1734) G Protein(Asn 66-Arg297)(P27022-1) was expressed in Insect Cells, with a C-terminal polyhistidine tag.
Species	RSV
Source	Insect Cells
ProteinLength	66-297 aa
Form	Lyophilized from sterile 50mM Tris, 100mM NaCl, pH 8.0, 10% glycerol, 0.5mM EDTA, 0.5mM PMSF.
Molecular Mass	The secreted recombinant human RSV-G comprises 242 amino acids and has a predicted molecular mass of 26.3 kDa. As a result of glycosylation, the apparent molecular mass of RSV protein G is approximately 40-55 kDa in SDS-PAGE under reducing conditions.
Endotoxin	< 1.0 EU per µg of the protein as determined by the LAL method.
Purity	> 92 % as determined by SDS-PAGE
Storage	Store it under sterile conditions at -20°C to -80°C upon receiving. Recommend to aliquot the protein into smaller quantities for optimal storage. Avoid repeated freeze-

 Tel: 1-631-559-9269 1-516-512-3133

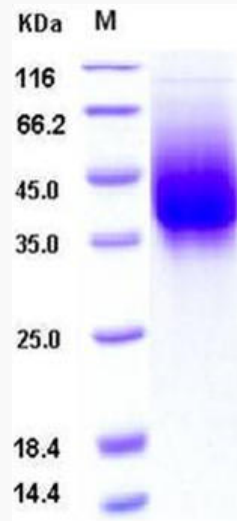
 Email: info@creative-biomart.com  Fax: 1-631-938-8127

 45-1 Ramsey Road, Shirley, NY 11967, USA

thaw cycles.

Reconstitution

It is recommended that sterile water be added to the vial to prepare a stock solution of 0.2 ug/ul. Centrifuge the vial at 4°C before opening to recover the entire contents.

SDS-PAGE

 Tel: 1-631-559-9269 1-516-512-3133

 Email: info@creative-biomart.com  Fax: 1-631-938-8127

 45-1 Ramsey Road, Shirley, NY 11967, USA