

## Recombinant RSV (A, rsb1734)(95 % homologous with strain rsb1734) G Protein, His-tagged

Cat. No. G-292V Lot. No. (See product label)

### SPECIFICATION

<b>Product Overview</b>	Recombinant RSV (A, rsb1734)(95 % homologous with strain rsb1734) G Protein(Asn 66-Arg 297)(P27022-1) was expressed in HEK293, with a C-terminal polyhistidine tag.
<b>Species</b>	RSV
<b>Source</b>	HEK293
<b>ProteinLength</b>	66-297 aa
<b>Form</b>	Lyophilized from sterile PBS, pH 7.4.
<b>Molecular Mass</b>	The secreted recombinant human RSV-G comprises 242 amino acids with a predicted molecular mass of 26.7 kDa. As a result of highly glycosylation, the RSV-G protein migrates as an approximately 80-90 kDa band in SDS-PAGE under reducing conditions.
<b>Endotoxin</b>	< 1.0 EU per µg of the protein as determined by the LAL method.
<b>Purity</b>	> 95 % as determined by SDS-PAGE
<b>Storage</b>	Store it under sterile conditions at -20°C to -80°C upon receiving. Recommend to aliquot the protein into smaller quantities for optimal storage. Avoid repeated freeze-thaw cycles.

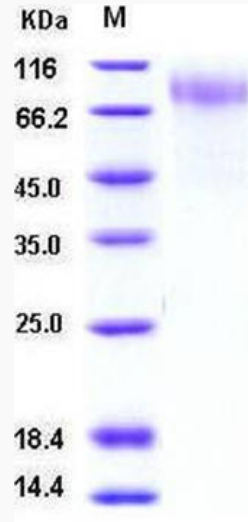
 Tel: 1-631-559-9269 1-516-512-3133

 Email: [info@creative-biomart.com](mailto:info@creative-biomart.com)  Fax: 1-631-938-8127

 45-1 Ramsey Road, Shirley, NY 11967, USA

**Reconstitution**

It is recommended that sterile water be added to the vial to prepare a stock solution of 0.2 ug/ul. Centrifuge the vial at 4°C before opening to recover the entire contents.

**SDS-PAGE**

 Tel: 1-631-559-9269 1-516-512-3133

 Email: [info@creative-biomart.com](mailto:info@creative-biomart.com)  Fax: 1-631-938-8127

 45-1 Ramsey Road, Shirley, NY 11967, USA