

Recombinant HRSV G protein, His-tagged

Cat. No. G-99V Lot. No. (See product label)

SPECIFICATION

Product Overview	Recombinant HRSV G protein(His 67 - Arg 297) fused with His tag at C-terminal was expressed in HEK293.
Species	HRSV
Source	HEK293
ProteinLength	His 67 - Arg 297
Description	<p>Human respiratory syncytial virus (HRSV) is the most common etiological agent of acute lower respiratory tract disease in infants and can cause repeated infections throughout life. Human respiratory syncytial virus A (strain Long) major surface glycoprotein G (RSV-G), a member of the pneumoviruses glycoprotein G family, is also known as attachment glycoprotein G and membrane-bound glycoprotein (mG), which contains a linear heparin binding domain essential for virus attachment to the host. Concretely speaking, RSV-G can attache the virion to the host cell membrane by interacting with heparan sulfate, initiating the infection. Furthermore, RSV-G can also interact with host CX3CR1, the receptor for the CX3C chemokine fractalkine, to modulate the immune response and facilitate infection. Unlike the other paramyxovirus attachment proteins, RSV-G lacks both neuraminidase and hemagglutinating activities.</p>
Predicted N Terminal	His 67
Form	Lyophilized from 0.22

 Tel: 1-631-559-9269 1-516-512-3133

 Email: info@creative-biomart.com  Fax: 1-631-938-8127

 45-1 Ramsey Road, Shirley, NY 11967, USA

	µm filtered solution in PBS, pH7.4. Normally Mannitol or Trehalose are added as protectants before lyophilization.
Molecular Mass	Has a calculated MW of 26.2 kDa. DTT-reduced Protein migrates as 60-94 kDa in SDS-PAGE due to glycosylation.
Endotoxin	Less than 1.0 EU per µg of the rh RSV-G by the LAL method.
Purity	>90% as determined by SDS-PAGE.
Storage	Avoid repeated freeze-thaw cycles. No activity loss was observed after storage at: In lyophilized state for 1 year (4 centigrade); After reconstitution under sterile conditions for 3 months (-70 centigrade).

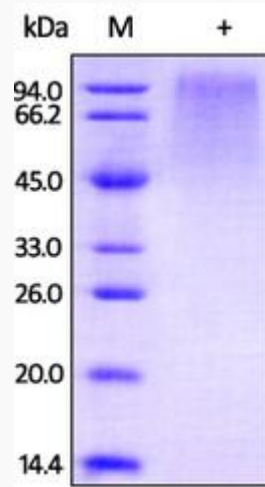
GENE INFORMATION

Gene Name	G G [Human respiratory syncytial virus]
Official Symbol	G
Synonyms	G; attachment glycoprotein
Gene ID	1489824
Protein Refseq	NP_056862
UniProt ID	O36633

 Tel: 1-631-559-9269 1-516-512-3133

 Email: info@creative-biomart.com  Fax: 1-631-938-8127

 45-1 Ramsey Road, Shirley, NY 11967, USA



 Tel: 1-631-559-9269 1-516-512-3133

 Email: info@creative-biomart.com  Fax: 1-631-938-8127

 45-1 Ramsey Road, Shirley, NY 11967, USA