

Recombinant Human G0S2 Protein, GST-tagged

Cat. No. G0S2-4603H **Lot. No.** (See product label)

SPECIFICATION

Product Overview	Human G0S2 full-length ORF (AAH09694.1, 1 a.a. - 103 a.a.) recombinant protein with GST-tag at N-terminal.
Species	Human
Source	Wheat Germ
Description	G0S2 (G0/G1 Switch 2) is a Protein Coding gene. Among its related pathways are Regulation of lipid metabolism by Peroxisome proliferator-activated receptor alpha (PPARalpha) and Metabolism.
Molecular Mass	37.07 kDa
AA Sequence	METVQELIPLAKEMMAQKRKGMVKLYVLGSVLALFGVVLGLMETVCSPFTAARRL RDQEAAVAELQAALERQALQKQALQEKGKQQDQDTVLGGRALSNRQHAS
Applications	Enzyme-linked Immunoabsorbent Assay Western Blot (Recombinant protein) Antibody Production Protein Array
Notes	Best use within three months from the date of receipt of this protein.
Storage	Store at -80 centigrade. Aliquot to avoid repeated freezing and thawing.

 Tel: 1-631-559-9269 1-516-512-3133

 Email: info@creative-biomart.com  Fax: 1-631-938-8127

 45-1 Ramsey Road, Shirley, NY 11967, USA

Storage Buffer 50 mM Tris-HCl, 10 mM reduced Glutathione, pH=8.0 in the elution buffer.

GENE INFORMATION

Gene Name G0S2 G0/G1switch 2 [Homo sapiens]

Official Symbol G0S2

Synonyms RP1-28010.2; G0S2; G0/G1switch 2; G0/G1 Switch 2; Putative Lymphocyte G0/G1 Switch Gene 2; G0/G1 Switch Regulatory Protein 2; G0/G1switch 2

Gene ID 50486

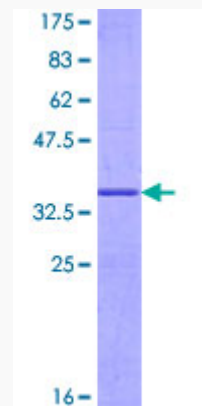
mRNA Refseq NM_015714

Protein Refseq NP_056529

MIM 614447

UniProt ID P27469

Quality Control Testing



Tel: 1-631-559-9269 1-516-512-3133

Email: info@creative-biomart.com Fax: 1-631-938-8127

45-1 Ramsey Road, Shirley, NY 11967, USA



12.5% SDS-PAGE Stained with Coomassie Blue.

 Tel: 1-631-559-9269 1-516-512-3133

 Email: info@creative-biomart.com  Fax: 1-631-938-8127

 45-1 Ramsey Road, Shirley, NY 11967, USA