

# Recombinant Human G6PC Protein, Full Length, N-His tagged

Cat. No. G6PC-01HFL Lot. No. (See product label)

## SPECIFICATION

<b>Product Overview</b>	Recombinant Human G6PC Protein (Full Length) with N-His tag was expressed in HEK293.
<b>Species</b>	Human
<b>Source</b>	HEK293
<b>ProteinLength</b>	Full Length
<b>Description</b>	<p>Glucose-6-phosphatase (G6Pase) is a multi-subunit integral membrane protein of the endoplasmic reticulum that is composed of a catalytic subunit and transporters for G6P, inorganic phosphate, and glucose. This gene (G6PC) is one of the three glucose-6-phosphatase catalytic-subunit-encoding genes in human: G6PC, G6PC2 and G6PC3. Glucose-6-phosphatase catalyzes the hydrolysis of D-glucose 6-phosphate to D-glucose and orthophosphate and is a key enzyme in glucose homeostasis, functioning in gluconeogenesis and glycogenolysis. Mutations in this gene cause glycogen storage disease type I (GSD1). This disease, also known as von Gierke disease, is a metabolic disorder characterized by severe hypoglycemia associated with the accumulation of glycogen and fat in the liver and kidneys.</p>
<b>Molecular Mass</b>	41 kDa
<b>AA Sequence</b>	<p>HHHHHHMEEGMNVLHDFGIQSTHYLQVNYQDSQDWFILVSVIADLRNFAFYVLFPIWF            HLQEAVGIKLLWVAVIGDWLNLVFKWILFGQRPYWWVLDTDYYSNTSVPLIKQFPVT            CETGPGSPSGHAMGTAGVYYVMVTSTLSIFQGKIKPTYRFRCLNVILWLGFVAVQL</p>

 Tel: 1-631-559-9269 1-516-512-3133

 Email: [info@creative-biomart.com](mailto:info@creative-biomart.com)  Fax: 1-631-938-8127

 45-1 Ramsey Road, Shirley, NY 11967, USA

NVCLSRITYLAAHFPHQVVAGVLSGIAVAETFSHIHSIYNASLKKYFLITFFLFSFAIGFYLLKGLGVDLLWTLEKAQRWCEQPEVWHIDTTPFASLLKNLGTFLGGLALNSSMYRESCKGKLSKWLFPRLSSIVASLVLLHVFDLKPSSQVELVFYVLSFCKSAVVPLASVSVIPYCLAQVLGQPHKKSL

**Purity** > 80% by SDS-PAGE

**Storage** Store it under sterile conditions at -20 to -80 centigrade. It is recommended that the protein be aliquoted for optimal storage. Avoid repeated freeze-thaw cycles.

**Concentration** 0.08 mg/mL

**Storage Buffer** Sterile 100 mM KH<sub>2</sub>PO<sub>4</sub>, pH 7.4, 400mM KCl, 500 mM NaCl, 0.025% Triton X-100, 1mM PMSF

## GENE INFORMATION

**Gene Name** G6PC glucose-6-phosphatase, catalytic subunit [ Homo sapiens (human) ]

**Official Symbol** G6PC

**Synonyms** G6PC; glucose-6-phosphatase, catalytic subunit; G6PT, glucose 6 phosphatase, catalytic (glycogen storage disease type I, von Gierke disease); glucose-6-phosphatase; glycogen storage disease type I; von Gierke disease; GSD1a; G6Pase; G-6-Pase; G6Pase-alpha; glucose-6-phosphatase alpha; G6PT; GSD1; G6PC1; MGC163350

**Gene ID** 2538

**mRNA Refseq** NM\_000151

 Tel: 1-631-559-9269 1-516-512-3133

 Email: [info@creative-biomart.com](mailto:info@creative-biomart.com)  Fax: 1-631-938-8127

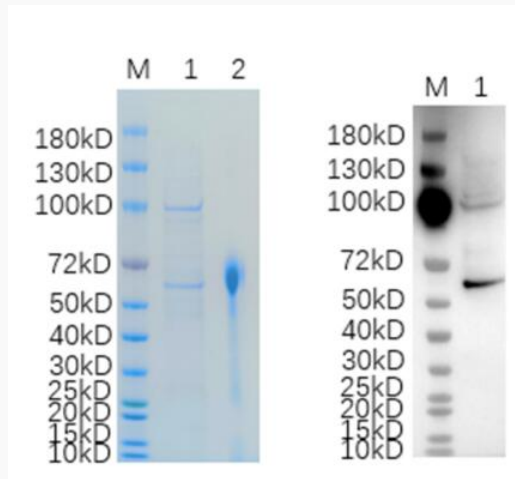
 45-1 Ramsey Road, Shirley, NY 11967, USA

**Protein Refseq** NP\_000142

**MIM** 613742

**UniProt ID** P35575

**Reducing 12% SDS-PAGE (CBB stained) and WB (Anti-His Mouse Monoclonal antibody) analysis profiles of purified G6PC**



1. G6PC
2. BSA

 Tel: 1-631-559-9269 1-516-512-3133

 Email: [info@creative-biomart.com](mailto:info@creative-biomart.com)  Fax: 1-631-938-8127

 45-1 Ramsey Road, Shirley, NY 11967, USA