

Recombinant Human G6PC protein, His-tagged

Cat. No. G6PC-1543H Lot. No. (See product label)

SPECIFICATION

Product Overview	Recombinant Human G6PC protein(Asn276~Leu357), fused with N-terminal His Tag, was expressed in E.coli.
Species	Human
Source	E.coli
ProteinLength	Asn276~Leu357
Form	PBS, pH7.4, containing 0.01% SKL, 5% Trehalose.
Molecular Mass	14kDa
Endotoxin	<1.0EU per 1g (determined by the LAL method)
Purity	> 90%
Storage	Avoid repeated freeze/thaw cycles. Store at 2-8°C for one month. Aliquot and store at -80°C for 12 months.
Reconstitution	Reconstitute in 10mM PBS (pH7.4) to a concentration of 0.1-1.0 mg/mL. Do not vortex.

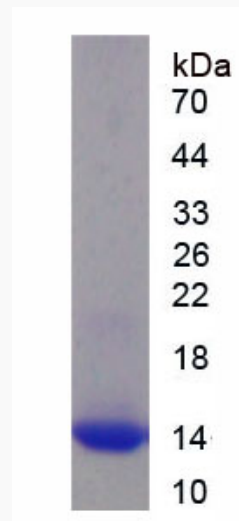
GENE INFORMATION

 Tel: 1-631-559-9269 1-516-512-3133

 Email: info@creative-biomart.com  Fax: 1-631-938-8127

 45-1 Ramsey Road, Shirley, NY 11967, USA

Gene Name	G6PC glucose-6-phosphatase, catalytic subunit [Homo sapiens]
Official Symbol	G6PC
Synonyms	G6PC; glucose-6-phosphatase, catalytic subunit; G6PT, glucose 6 phosphatase, catalytic (glycogen storage disease type I, von Gierke disease); glucose-6-phosphatase; glycogen storage disease type I; von Gierke disease; GSD1a
Gene ID	2538
mRNA Refseq	NM_000151
Protein Refseq	NP_000142
MIM	613742
UniProt ID	P35575

SDS-PAGE


 Tel: 1-631-559-9269 1-516-512-3133

 Email: info@creative-biomart.com  Fax: 1-631-938-8127

 45-1 Ramsey Road, Shirley, NY 11967, USA