

Recombinant Human G6PC protein, His-SUMO-tagged

Cat. No. G6PC-4222H Lot. No. (See product label)

SPECIFICATION

| | |
|-------------------------|--|
| Product Overview | Recombinant Human G6PC protein(P35575)(82-117aa), fused with N-terminal His tag and SUMO tag, was expressed in E.coli. |
| Species | Human |
| Source | E.coli |
| ProteinLength | 82-117aa |
| Form | If the delivery form is liquid, the default storage buffer is Tris/PBS-based buffer, 5%-50% glycerol. If the delivery form is lyophilized powder, the buffer before lyophilization is Tris/PBS-based buffer, 6% Trehalose, pH 8.0. |
| Molecular Mass | 17.1 kDa |
| Purity | Greater than 85% as determined by SDS-PAGE. |
| Storage | Store at -20°C/-80°C upon receipt, aliquoting is necessary for mutiple use. Avoid repeated freeze-thaw cycles. |
| Reconstitution | We recommend that this vial be briefly centrifuged prior to opening to bring the contents to the bottom. Please reconstitute protein in deionized sterile water to a concentration of 0.1-1.0 mg/mL. We recommend to add 5-50% of glycerol (final concentration) and aliquot for long-term storage at -20°C/-80°C. |

 Tel: 1-631-559-9269 1-516-512-3133

 Email: info@creative-biomart.com  Fax: 1-631-938-8127

 45-1 Ramsey Road, Shirley, NY 11967, USA

AA Sequence QRPYWWVLDTDYYSNTSVPLIKQFPVTCETGPGSPS

GENE INFORMATION

Gene Name G6PC glucose-6-phosphatase, catalytic subunit [Homo sapiens]

Official Symbol G6PC

Synonyms G6PC; glucose-6-phosphatase, catalytic subunit; G6PT, glucose 6 phosphatase, catalytic (glycogen storage disease type I, von Gierke disease); glucose-6-phosphatase; glycogen storage disease type I; von Gierke disease; GSD1a; G6Pase; G-6-Pase; G6Pase-alpha; glucose-6-phosphatase alpha; G6PT; GSD1; G6PC1; MGC163350;

Gene ID 2538

mRNA Refseq NM_000151

Protein Refseq NP_000142

MIM 613742

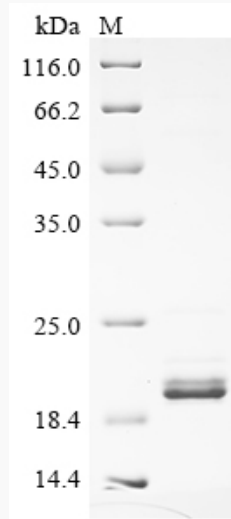
UniProt ID P35575

 Tel: 1-631-559-9269 1-516-512-3133

 Email: info@creative-biomart.com  Fax: 1-631-938-8127

 45-1 Ramsey Road, Shirley, NY 11967, USA

SDS-PAGE



 Tel: 1-631-559-9269 1-516-512-3133

 Email: info@creative-biomart.com  Fax: 1-631-938-8127

 45-1 Ramsey Road, Shirley, NY 11967, USA