

## Recombinant Human G6PC protein, His-sumostar-tagged

Cat. No. G6PC-5755H Lot. No. (See product label)

### SPECIFICATION

<b>Product Overview</b>	Recombinant Human G6PC protein(P35575)(82-117aa), fused with N-terminal His and sumostar tag, was expressed in Yeast.
<b>Species</b>	Human
<b>Source</b>	Yeast
<b>ProteinLength</b>	82-117aa
<b>Tag</b>	N-His-sumostar
<b>Form</b>	If the delivery form is liquid, the default storage buffer is Tris/PBS-based buffer, 5%-50% glycerol. If the delivery form is lyophilized powder, the buffer before lyophilization is Tris/PBS-based buffer, 6% Trehalose, pH 8.0.
<b>Molecular Mass</b>	17.5 kDa
<b>Purity</b>	Greater than 90% as determined by SDS-PAGE.
<b>Storage</b>	Store at -20°C/-80°C upon receipt, aliquoting is necessary for mutiple use. Avoid repeated freeze-thaw cycles.
<b>Reconstitution</b>	We recommend that this vial be briefly centrifuged prior to opening to bring the contents to the bottom. Please reconstitute protein in deionized sterile water to a concentration of 0.1-1.0 mg/mL. We recommend to add 5-50% of glycerol (final

 Tel: 1-631-559-9269 1-516-512-3133

 Email: [info@creative-biomart.com](mailto:info@creative-biomart.com)  Fax: 1-631-938-8127

 45-1 Ramsey Road, Shirley, NY 11967, USA

concentration) and aliquot for long-term storage at -20°C/-80°C.

**AA Sequence** QRPYWWVLDTDYYSNLTVPLIKQFPVTCETGPGSPS

## GENE INFORMATION

**Gene Name** G6PC glucose-6-phosphatase, catalytic subunit [ Homo sapiens ]

**Official Symbol** G6PC

**Synonyms** G6PC; glucose-6-phosphatase, catalytic subunit; G6PT, glucose 6 phosphatase, catalytic (glycogen storage disease type I, von Gierke disease); glucose-6-phosphatase; glycogen storage disease type I; von Gierke disease; GSD1a; G6Pase; G-6-Pase; G6Pase-alpha; glucose-6-phosphatase alpha; G6PT; GSD1; G6PC1; MGC163350;

**Gene ID** 2538

**mRNA Refseq** NM\_000151

**Protein Refseq** NP\_000142

**MIM** 613742

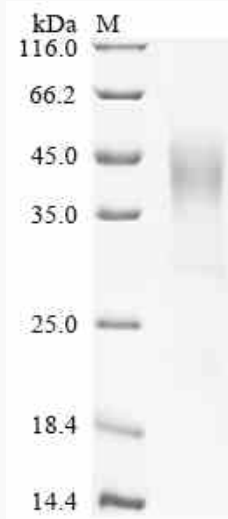
**UniProt ID** P35575

 Tel: 1-631-559-9269 1-516-512-3133

 Email: [info@creative-biomart.com](mailto:info@creative-biomart.com)  Fax: 1-631-938-8127

 45-1 Ramsey Road, Shirley, NY 11967, USA

**SDS-PAGE**



 Tel: 1-631-559-9269 1-516-512-3133

 Email: [info@creative-biomart.com](mailto:info@creative-biomart.com)  Fax: 1-631-938-8127

 45-1 Ramsey Road, Shirley, NY 11967, USA