

## Recombinant Human G6PC3 Protein, GST-tagged

Cat. No. G6PC3-4614H Lot. No. (See product label)

### SPECIFICATION

<b>Product Overview</b>	Human G6PC3 full-length ORF ( NP_612396.1, 1 a.a. - 346 a.a.) recombinant protein with GST-tag at N-terminal.
<b>Species</b>	Human
<b>Source</b>	Wheat Germ
<b>Description</b>	This gene encodes the catalytic subunit of glucose-6-phosphatase (G6Pase). G6Pase is located in the endoplasmic reticulum (ER) and catalyzes the hydrolysis of glucose-6-phosphate to glucose and phosphate in the last step of the gluconeogenic and glycogenolytic pathways. Mutations in this gene result in autosomal recessive severe congenital neutropenia. Multiple transcript variants have been found for this gene, only one of which is expected to express a protein
<b>Molecular Mass</b>	65.1 kDa
<b>AA Sequence</b>	MESTLGAGIVIAEALQNQLAWLENVWLWITFLGDPKILFLFYFPAAYYASRRVGI AVL WISLITEWLNLIKFWFLFGDRPFWWWHESGYYSQAPAVHQFPSSCETGPGSPSGH CMITGAALWPIMTALSSQVATRARSRWVRVMPSLAYCTFLLAVGLSRIFILAHFPHQV LAGLITGAVLGWLMTPRVPMERELSFYGLTALALMLGTSLIYWTLFTLGLDLSWSISL AFKWCERPEWIHVDSRPFASLSRDSGAALGLGIALHSPCYAQVRRRAQLGNGQKIAC LVLAMGLLGPLDWLGHPQISLFYIFNFLKYTLWPCLVLALVPWAVHMFSAQEAPPIH SS
<b>Applications</b>	Enzyme-linked Immunoabsorbent Assay

 Tel: 1-631-559-9269 1-516-512-3133

 Email: [info@creative-biomart.com](mailto:info@creative-biomart.com)  Fax: 1-631-938-8127

 45-1 Ramsey Road, Shirley, NY 11967, USA

Western Blot (Recombinant protein)  
 Antibody Production  
 Protein Array

**Notes** Best use within three months from the date of receipt of this protein.

**Storage** Store at -80 centigrade. Aliquot to avoid repeated freezing and thawing.

**Storage Buffer** 50 mM Tris-HCl, 10 mM reduced Glutathione, pH=8.0 in the elution buffer.

## GENE INFORMATION

**Gene Name** [G6PC3 glucose-6-phosphatase catalytic subunit 3 \[ Homo sapiens \(human\) \]](#)

**Official Symbol** [G6PC3](#)

**Synonyms** G6PC3; glucose-6-phosphatase catalytic subunit 3; SCN4; UGRP; glucose-6-phosphatase 3; G-6-Pase 3; G6Pase 3; G6Pase-beta; glucose 6 phosphatase, catalytic, 3; ubiquitous glucose-6-phosphatase catalytic subunit-related protein; ubiquitously expressed G6Pase catalytic subunit-related protein; EC 3.1.3.9

**Gene ID** [92579](#)

**mRNA Refseq** [NM\\_001319945](#)

**Protein Refseq** [NP\\_001306874](#)

**MIM** [611045](#)

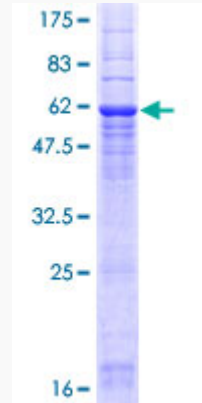
**UniProt ID** [Q9BUM1](#)

 Tel: 1-631-559-9269 1-516-512-3133

 Email: [info@creative-biomart.com](mailto:info@creative-biomart.com)  Fax: 1-631-938-8127

 45-1 Ramsey Road, Shirley, NY 11967, USA

**Quality Control  
Testing**



12.5% SDS-PAGE Stained with Coomassie Blue.

 Tel: 1-631-559-9269 1-516-512-3133

 Email: [info@creative-biomart.com](mailto:info@creative-biomart.com)  Fax: 1-631-938-8127

 45-1 Ramsey Road, Shirley, NY 11967, USA