

# Active Recombinant Full Length Human G6PD Protein, C-Flag-tagged

**Cat. No.** G6PD-422HFL    **Lot. No.** (See product label)

## SPECIFICATION

<b>Product Overview</b>	Recombinant Full Length Human G6PD Protein, fused to Flag-tag at C-terminus, was expressed in Mammalian cells.
<b>Species</b>	Human
<b>Source</b>	Mammalian Cells
<b>Description</b>	This gene encodes glucose-6-phosphate dehydrogenase. This protein is a cytosolic enzyme encoded by a housekeeping X-linked gene whose main function is to produce NADPH, a key electron donor in the defense against oxidizing agents and in reductive biosynthetic reactions. G6PD is remarkable for its genetic diversity. Many variants of G6PD, mostly produced from missense mutations, have been described with wide ranging levels of enzyme activity and associated clinical symptoms. G6PD deficiency may cause neonatal jaundice, acute hemolysis, or severe chronic non-spherocytic hemolytic anemia. Two transcript variants encoding different isoforms have been found for this gene.
<b>Form</b>	25 mM Tris HCl, pH 7.3, 100 mM glycine, 10% glycerol.
<b>Bio-activity</b>	Acetylation substrate
<b>Molecular Mass</b>	62.3 kDa
<b>AA Sequence</b>	MGRRGSAPGNRRTLRCERGRRRRSADSVMAEQVALSRTQVCGILREELFQGD

 Tel: 1-631-559-9269    1-516-512-3133

 Email: [info@creative-biomart.com](mailto:info@creative-biomart.com)     Fax: 1-631-938-8127

 45-1 Ramsey Road, Shirley, NY 11967, USA

AFHQSDTHIFIIMGAS GDLAKKKIYPTIWWLFRDGLLPENTFIVGYARSRLTVADIRKQ  
 SEPPFKATPEEKLKLEDDFFARNSYVAG QYDDAASYQRLNSHMNALHLGSQANRLFY  
 LALPPTVYEAVTKNIHESCMSQIGWNRIIVEKPFGRDLQSS DRLSNHISLRFREDQIY  
 RIDHYLGKEMVQNLMLVLRFANRIFGPIWNRDNIACVILTFKEPFGTEGRGGYF DEFGI  
 IRDVMQNHLLQMLCLVAMEKPASTNSDDVRDEKVKVLKCISEVQANNVVLGQYVGN  
 PDGEGEATK GYLDDPTVPRGSTTATFAAVVLYVENERWDGVPFILRCGKALNERKA  
 EVRLQFHDVAGDIFHQQCKRNEL VIRVQPNEAVYTKMMTKKPGMFFNPEESELDLT  
 YGNRYKNVKLPDAYERLILDVFCGSQMHFVRSDELRE  
 AWRIFTPLLHQIELEKPKPIPIYIGSRGPTEADELMKRVGFQYEGTYKVVNPHKLTRT  
 RPLEQKLISEEDLAANDILDYKDDDDKV

<b>Purity</b>	> 80% as determined by SDS-PAGE and Coomassie blue staining.
<b>Stability</b>	Stable for 12 months from the date of receipt of the product under proper storage and handling conditions. Avoid repeated freeze-thaw cycles.
<b>Storage</b>	Store at -80 centigrade.
<b>Concentration</b>	>50 ug/mL as determined by microplate BCA method.
<b>Preparation</b>	Recombinant protein was captured through anti-DDK affinity column followed by conventional chromatography steps.
<b>Protein Families</b>	Druggable Genome
<b>Protein Pathways</b>	Glutathione metabolism, Metabolic pathways, Pentose phosphate pathway
<b>Full Length</b>	Full L.

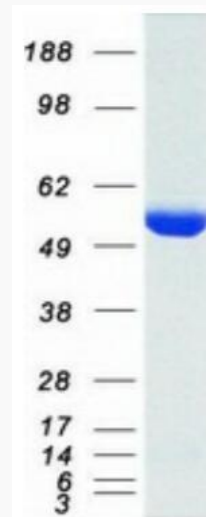
## GENE INFORMATION

 Tel: 1-631-559-9269 1-516-512-3133

 Email: [info@creative-biomart.com](mailto:info@creative-biomart.com)  Fax: 1-631-938-8127

 45-1 Ramsey Road, Shirley, NY 11967, USA

<b>Gene Name</b>	G6PD glucose-6-phosphate dehydrogenase [ Homo sapiens (human) ]
<b>Official Symbol</b>	G6PD
<b>Synonyms</b>	G6PD1
<b>Gene ID</b>	2539
<b>mRNA Refseq</b>	NM_000402.4
<b>Protein Refseq</b>	NP_000393.4
<b>MIM</b>	305900
<b>UniProt ID</b>	P11413



Coomassie blue staining of purified G6PD protein.

 Tel: 1-631-559-9269 1-516-512-3133

 Email: [info@creative-biomart.com](mailto:info@creative-biomart.com)  Fax: 1-631-938-8127

 45-1 Ramsey Road, Shirley, NY 11967, USA