

Recombinant Human G6PD Protein, Myc/DDK-tagged, C13 and N15-labeled

Cat. No. G6PD-905H **Lot. No.** (See product label)

SPECIFICATION

Product Overview	G6PD MS Standard C13 and N15-labeled recombinant protein (NP_001035810) with a C-terminal MYC/DDK tag, was expressed in HEK293 cells.
Species	Human
Source	HEK293
Description	This gene encodes glucose-6-phosphate dehydrogenase. This protein is a cytosolic enzyme encoded by a housekeeping X-linked gene whose main function is to produce NADPH, a key electron donor in the defense against oxidizing agents and in reductive biosynthetic reactions. G6PD is remarkable for its genetic diversity. Many variants of G6PD, mostly produced from missense mutations, have been described with wide ranging levels of enzyme activity and associated clinical symptoms. G6PD deficiency may cause neonatal jaundice, acute hemolysis, or severe chronic non-spherocytic hemolytic anemia. Two transcript variants encoding different isoforms have been found for this gene.
Molecular Mass	59.3 kDa
AA Sequence	MAEQVALSRTQVCGILREELFQGDAFHQSDTHIFIIMGASGDLAKKKIYPTIWWLFRD GLLPENTFIVGYARSRLTVADIRKQSEPPFFKATPEEKLKLEDFFARNNSYVAGQYDDAA SYQRLNSHMNALHLGSQANRLFYLALPPTVYEAVTKNIHESCMSQIGWNRRIIVEKPF GRDLQSSDRLSNHISSLFREDQIYRIDHYLGKEMVQNLMLVLRFANRIFGPIWNRDNIA

 Tel: 1-631-559-9269 1-516-512-3133

 Email: info@creative-biomart.com  Fax: 1-631-938-8127

 45-1 Ramsey Road, Shirley, NY 11967, USA

CVILTFKEPFGTEGRGGYFDEFGIIRDVMQNHLLQMLCLVAMEKPASTNSDDVRDEK
 VKVLKCISEVQANNVVLGQYVGNPDGEGEATKGYLDDPTVPRGSTTATFAAVVLYV
 ENERWDGVPFILRCGKALNERKAEVRLQFHDVAGDIFHQQCKRNELVIRVQPNEAV
 YTKMMTKKPGMFFNPEESELDLTYGNRYKNVKLPDAYERLILDVFCGSQMHFVRS
 ELREAWRIFTPLLHQIELEKPKPIPIYIYGSRGPTAEDELMKRVGFQYEGTYKWVNP
 KLTRTRPLEQKLISEEDLAANDILDYKDDDDKV

Purity > 80% as determined by SDS-PAGE and Coomassie blue staining

Stability Stable for 3 months from receipt of products under proper storage and handling conditions.

Storage Store at -80 centigrade. Avoid repeated freeze-thaw cycles.

Concentration 50 µg/mL as determined by BCA

Storage Buffer 100 mM glycine, 25 mM Tris-HCl, pH 7.3.

GENE INFORMATION

Gene Name G6PD glucose-6-phosphate dehydrogenase [Homo sapiens (human)]

Official Symbol G6PD

Synonyms G6PD; glucose-6-phosphate dehydrogenase; glucose-6-phosphate 1-dehydrogenase; G6PD1; glucose-6-phosphate dehydrogenase, G6PD;

Gene ID 2539

mRNA Refseq NM_001042351

 Tel: 1-631-559-9269 1-516-512-3133

 Email: info@creative-biomart.com  Fax: 1-631-938-8127

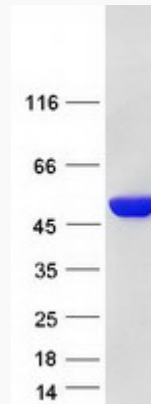
 45-1 Ramsey Road, Shirley, NY 11967, USA

Protein Refseq NP_001035810

MIM 305900

UniProt ID P11413

SDS-PAGE



 Tel: 1-631-559-9269 1-516-512-3133

 Email: info@creative-biomart.com  Fax: 1-631-938-8127

 45-1 Ramsey Road, Shirley, NY 11967, USA