

Recombinant Full Length Human GAB1 Protein, C-Flag-tagged

Cat. No. GAB1-1266HFL Lot. No. (See product label)

SPECIFICATION

Product Overview	Recombinant Full Length Human GAB1 Protein, fused to Flag-tag at C-terminus, was expressed in Mammalian cells.
Species	Human
Source	Mammalian Cells
Description	The protein encoded by this gene is a member of the IRS1-like multisubstrate docking protein family. It is an important mediator of branching tubulogenesis and plays a central role in cellular growth response, transformation and apoptosis. Two transcript variants encoding different isoforms have been found for this gene.
Form	25 mM Tris HCl, pH 7.3, 100 mM glycine, 10% glycerol.
Molecular Mass	79.8 kDa
AA Sequence	MSGGEVVCSGWLRKSPPEKKLKRYAWKRRWVLRSGRLTGDPDVLEYYKNDHAK KPIRIIDLNLCCQQVDA GLTFNKKEFENSYIFDINTIDRIFYLVDSEEMNKWVRCICDI CGFNPTTEEDPVKPPGSSLQAPADLPL AINTAPPSTQADSSSATLPPPYQLINVPPHL ETLGIQEDPQDYLLINCQSKKPEPTRTHADSASTSSE TDCNDNVPSHKNPASSQ SKHGMNGFFQQQMIYDSPPSRAPSASVDSSLYNLPRSYSHDVLPKVSPSSTEA DG ELYVFNTPSGTSSVETQMRHVSISYDIPPTPGNTYQIPRTFPEGTLGQTSKLDITIPDIP PPRPPKPHP AHDRSPVETCSIPRTASDTSYCIPTAGMSPSRNTISTVDLNLKLRK DASSQDCYDIPRAFPSDRSSSL EGFHNHFVKVKNVLTVGVSSEELDENYVPMNPNS PPRQHSSSFTEPIQEANYVPMTPGTFDFSSFGMQVP PPAHMGFRSSPKTPRRPV

Tel: 1-631-559-9269 1-516-512-3133

Email: info@creative-biomart.com Fax: 1-631-938-8127

45-1 Ramsey Road, Shirley, NY 11967, USA

PVADCEPPPVDRNLKPDRKGQSPKILRLKPHGLERTDSQTIGDFATRRKVK PAPLEI
 KPLPEWEELQAPVRSPITRSFARDSSRFPMSPRPDSVHSTTSSSDSHDSEENYVPM
 NPNLSSD PNLFGSNSLDGGSSPMIKPKGDKQVEYLDLDDSGKSTPPRKQKSSG
 SGSSVADERVDYVVVDQKTLAL
 KSTREAWTDGRQSTSETPAKSVKTRTRPLEQKLISEEDLAANDILDYKDDDDKV

Purity > 80% as determined by SDS-PAGE and Coomassie blue staining.

Stability Stable for 12 months from the date of receipt of the product under proper storage and handling conditions. Avoid repeated freeze-thaw cycles.

Storage Store at -80 centigrade.

Concentration >50 ug/mL as determined by microplate BCA method.

Preparation Recombinant protein was captured through anti-DDK affinity column followed by conventional chromatography steps.

Protein Families Druggable Genome

Protein Pathways ErbB signaling pathway, Neurotrophin signaling pathway, Renal cell carcinoma

Full Length Full L.

GENE INFORMATION

Gene Name GAB1 GRB2 associated binding protein 1 [Homo sapiens (human)]

Official Symbol GAB1

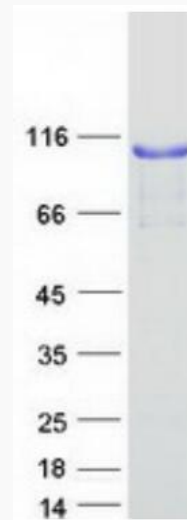
Synonyms DFNB26

 Tel: 1-631-559-9269 1-516-512-3133

 Email: info@creative-biomart.com  Fax: 1-631-938-8127

 45-1 Ramsey Road, Shirley, NY 11967, USA

Gene ID	2549
mRNA Refseq	NM_207123.3
Protein Refseq	NP_997006.1
MIM	604439
UniProt ID	Q13480



Coomassie blue staining of purified GAB1 protein.

 Tel: 1-631-559-9269 1-516-512-3133

 Email: info@creative-biomart.com  Fax: 1-631-938-8127

 45-1 Ramsey Road, Shirley, NY 11967, USA