

Recombinant Human GAB1 protein, His & T7-tagged

Cat. No. GAB1-1786H **Lot. No.** (See product label)

SPECIFICATION

Product Overview	Recombinant Human GAB1 aa. (Asn394~Glu656 (Accession # Q13480)) fused with N-terminal His & T7 tag was produced in E. coli cells.
Species	Human
Source	E.coli
ProteinLength	Asn394~Glu656
Description	The protein encoded by this gene is a member of the IRS1-like multisubstrate docking protein family. It is an important mediator of branching tubulogenesis and plays a central role in cellular growth response, transformation and apoptosis. Two transcript variants encoding different isoforms have been found for this gene.
Form	Freeze-dried powder
Molecular Mass	Predicted Molecular Mass: 33.0kDa
Endotoxin	<1.0EU per 1ug (determined by the LAL method)
Purity	>95%
Applications	SDS-PAGE; WB; ELISA; IP.
Stability	The thermal stability is described by the loss rate. The loss rate was determined by

 Tel: 1-631-559-9269 1-516-512-3133

 Email: info@creative-biomart.com  Fax: 1-631-938-8127

 45-1 Ramsey Road, Shirley, NY 11967, USA

accelerated thermal degradation test, that is, incubate the protein at 37°C for 48h, and no obvious degradation and precipitation were observed. The loss rate is less than 5% within the expiration date under appropriate storage condition.

Storage

Avoid repeated freeze/thaw cycles. Store at 2-8°C for one month. Aliquot and store at -80°C for 12 months.

Storage buffer

Supplied as lyophilized form in PBS, pH7.4, containing 5% sucrose, 0.01% sarcosyl.

Reconstitution

Reconstitute in sterile PBS, pH7.2-pH7.4.

Isoelectric Point

7.3

GENE INFORMATION

Gene Name

[GAB1 GRB2 associated binding protein 1 \[Homo sapiens \(human\) \]](#)

Official Symbol

[GAB1](#)

Synonyms

GAB1; GRB2 associated binding protein 1; GRB2-associated-binding protein 1; GRB2-associated binder 1; growth factor receptor bound protein 2-associated protein 1

Gene ID

[2549](#)

mRNA Refseq

[NM_002039.3](#)

Protein Refseq

[NP_002030.2](#)

UniProt ID

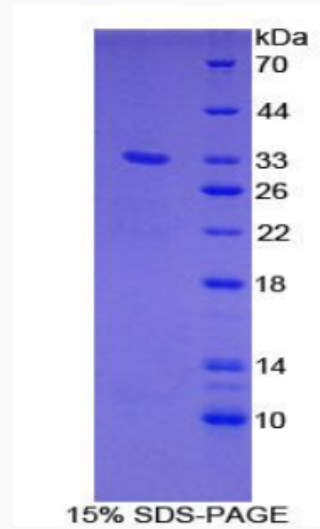
[Q13480](#)

 Tel: 1-631-559-9269 1-516-512-3133

 Email: info@creative-biomart.com  Fax: 1-631-938-8127

 45-1 Ramsey Road, Shirley, NY 11967, USA

SDS-PAGE



 Tel: 1-631-559-9269 1-516-512-3133

 Email: info@creative-biomart.com  Fax: 1-631-938-8127

 45-1 Ramsey Road, Shirley, NY 11967, USA