

Recombinant Human GAB1 Protein, Myc/DDK-tagged, C13 and N15-labeled

Cat. No. GAB1-3003H **Lot. No.** (See product label)

SPECIFICATION

Product Overview	GAB1 MS Standard C13 and N15-labeled recombinant protein (NP_002030) with a C-terminal MYC/DDK tag, was expressed in HEK293 cells.
Species	Human
Source	HEK293
Description	The protein encoded by this gene is a member of the IRS1-like multisubstrate docking protein family. It is an important mediator of branching tubulogenesis and plays a central role in cellular growth response, transformation and apoptosis. Two transcript variants encoding different isoforms have been found for this gene.
Molecular Mass	76.4 kDa
AA Sequence	<p>MSGGEVVCSGWLRKSPPEKKLKRYAWKRRWFVLRSGRLTGDPDVLEYYKNDHAK KPIRIIDLNLCCQQVDAGLTFNKKEFENSYIFDINTIDRIFYLVADSEEMNKWVRCICDI CGFNPTTEEDPVKPPGSSLQAPADLPLAINTAPPSTQADSSSATLPPPYQLINVPPhLE TLGIQEDPQDYLLLINCQSKKPEPTRTHADSAKSTSSETDCNDNVPSHKNPASSQSK HGMNGFFQQMIYDSPPSRAPASVDSSLYNLPRSYSHDVLPKVSPSSTEADGELY VFNTPSGTSSVETQMRHVSISYDIPPTPGNTYQIPRTFPEGTLGQTSKLDITIPDIPPR PPKPHPAHDRSPVETCSIPRTASD TDSSYCIPTAGMSPSRNTISTVDLNKLRK DAS SQDCYDIPRAFPSDRSSSLEGFHNHFVKVKNVLTVGSVSSEELDENYVPMNPNSPPR QHSSSFTEPIQEANYVPMTPGTFDFSSFGMQVPPPAHMGFRSSPKTPRRPVPVA</p>

 Tel: 1-631-559-9269 1-516-512-3133

 Email: info@creative-biomart.com  Fax: 1-631-938-8127

 45-1 Ramsey Road, Shirley, NY 11967, USA

DCEPPPVDRNLKPDRKVKPAPLEIKPLPEWEELQAPVRSPITRSFARDSSRFPMSPR
 PDSVHSTTSSSDSHDSEENYVPMNPNLSSDPNLFGSNSLDGGSSPMIKPKGDKQ
 VEYLDLDDSGKSTPPRKQKSSGSGSSVADERVDYVVVDQKTLALKSTREAWTD
 GRQSTESETPAKSVKTRTRPLEQKLISEEDLAANDILDYKDDDDKV

Purity > 80% as determined by SDS-PAGE and Coomassie blue staining

Stability Stable for 3 months from receipt of products under proper storage and handling conditions.

Storage Store at -80 centigrade. Avoid repeated freeze-thaw cycles.

Concentration 50 µg/mL as determined by BCA

Storage Buffer 100 mM glycine, 25 mM Tris-HCl, pH 7.3.

GENE INFORMATION

Gene Name GAB1 GRB2-associated binding protein 1 [Homo sapiens (human)]

Official Symbol GAB1

Synonyms GAB1; GRB2-associated binding protein 1; GRB2-associated-binding protein 1; GRB2-associated binder 1; growth factor receptor bound protein 2-associated protein 1;

Gene ID 2549

mRNA Refseq NM_002039

Protein Refseq NP_002030

 Tel: 1-631-559-9269 1-516-512-3133

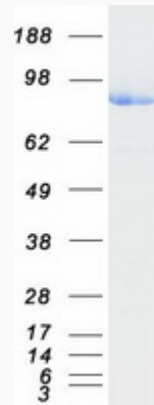
 Email: info@creative-biomart.com  Fax: 1-631-938-8127

 45-1 Ramsey Road, Shirley, NY 11967, USA

MIM 604439

UniProt ID Q13480

SDS-PAGE



 Tel: 1-631-559-9269 1-516-512-3133

 Email: info@creative-biomart.com  Fax: 1-631-938-8127

 45-1 Ramsey Road, Shirley, NY 11967, USA