

# Recombinant Human GAB3 Protein (Lys332-Gln583), N-His tagged

**Cat. No.** GAB3-3658H    **Lot. No.** (See product label)

## SPECIFICATION

<b>Product Overview</b>	Recombinant human GAB3 (Lys332-Gln583) protein fused with the N-His tag was expressed in E. coli.
<b>Species</b>	Human
<b>Source</b>	E.coli
<b>ProteinLength</b>	Lys332-Gln583
<b>Description</b>	This gene is a member of the GRB2-associated binding protein gene family. These proteins are scaffolding/docking proteins that are involved in several growth factor and cytokine signaling pathways, and they contain a pleckstrin homology domain, and bind SHP2 tyrosine phosphatase and GRB2 adapter protein. The protein encoded by this gene facilitates macrophage differentiation. Alternative splicing results in multiple transcript variants.
<b>Molecular Mass</b>	30.68 kDa
<b>Purity</b>	>90 % as determined by SDS-PAGE.
<b>Notes</b>	For research use only.
<b>Storage</b>	Use a manual defrost freezer and avoid repeated freeze thaw cycles. Store at 2 to 8 centigrade for one week. Store at -20 to -80 centigrade for twelve months from the

 Tel: 1-631-559-9269    1-516-512-3133

 Email: [info@creative-biomart.com](mailto:info@creative-biomart.com)     Fax: 1-631-938-8127

 45-1 Ramsey Road, Shirley, NY 11967, USA

	date of receipt.
<b>Storage Buffer</b>	0.01M PBS, pH 7.4, 0.02 % NLS
<b>Reconstitution</b>	Reconstitute in sterile water for a stock solution.
<b>Shipping</b>	In general, proteins are provided as lyophilized powder/frozen liquid. They are shipped out with dry ice/blue ice unless customers require otherwise.

## GENE INFORMATION

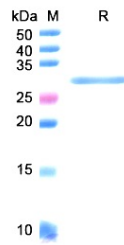
<b>Gene Name</b>	GAB3 GRB2 associated binding protein 3 [ Homo sapiens (human) ]
<b>Official Symbol</b>	GAB3
<b>Synonyms</b>	GAB3; GRB2 associated binding protein 3; GRB2-associated-binding protein 3; DOS/Gab family member 3; GRB2-associated binder 3; Gab3 scaffolding protein; growth factor receptor bound protein 2-associated protein 3
<b>Gene ID</b>	139716
<b>mRNA Refseq</b>	NM_080612
<b>Protein Refseq</b>	NP_542179
<b>MIM</b>	300482
<b>UniProt ID</b>	Q8WWW8

 Tel: 1-631-559-9269 1-516-512-3133

 Email: [info@creative-biomart.com](mailto:info@creative-biomart.com)  Fax: 1-631-938-8127

 45-1 Ramsey Road, Shirley, NY 11967, USA

**SDS-PAGE**



 Tel: 1-631-559-9269 1-516-512-3133

 Email: [info@creative-biomart.com](mailto:info@creative-biomart.com)  Fax: 1-631-938-8127

 45-1 Ramsey Road, Shirley, NY 11967, USA