

Recombinant Human GAB3 Protein, GST-tagged

Cat. No. GAB3-4621H Lot. No. (See product label)

SPECIFICATION

Product Overview	Human GAB3 full-length ORF (NP_542179.1, 1 a.a. - 586 a.a.) recombinant protein with GST-tag at N-terminal.
Species	Human
Source	Wheat Germ
Description	This gene is a member of the GRB2-associated binding protein gene family. These proteins are scaffolding/docking proteins that are involved in several growth factor and cytokine signaling pathways, and they contain a pleckstrin homology domain, and bind SHP2 tyrosine phosphatase and GRB2 adapter protein. The protein encoded by this gene facilitates macrophage differentiation. Two transcript variants encoding different isoforms have been found for this gene. [provided by RefSeq]
Molecular Mass	92 kDa
AA Sequence	MSAGDAVCTGWLVKSPPERKLQRYAWRKRWFVLRGRMSGNPDVLEYRKNHSS KPIRVIDLSECAVWKHVGPSFVRKEFQNNFVIVKTTSRTFYLVAKTEQEMQVWVHS ISQVCNLGHLEDGADSMESLSYTPSSLQPSSASSLLTAHAASSSLPRDDPNTNAVAT EETRSESELLFLPDYLVLSNCETGRLHHTSLPTRCDSWSNSDRSLEQASFDDVFVD CLQLPSSHLVHPSCHGSGAQEVPSSRPQAALIWSREINGPPRDHLSSSPLESSLS STIQVDKNQGS LPCGAKELDIMSNTPPPRPPKPSHLSERRQEEWSTHSGSKKPECT LVPRRISLSGLDNMRTWKADVEGQSLRHRDKRLSLNLPCRFSPMYPTASASIEDSY VPMSPQAGASGLGPHCSPDDYIPMNSGSISSPLPELPANLEPPPVNRDLKPQRKSR

 Tel: 1-631-559-9269 1-516-512-3133

 Email: info@creative-biomart.com  Fax: 1-631-938-8127

 45-1 Ramsey Road, Shirley, NY 11967, USA

PPPLDLRNLIIREHASLTRTRTVPCSRTSFLSPERNGIN SARFFANPVSREDEESYIE
 MEEHRTASSLSSGALTWTKKFSLDYALDFNSASPAPMQQKLLLSEEQRVDYVQVD
 EQKTQALQSTKQEWTDERQSKV

Applications	Enzyme-linked Immunoabsorbent Assay Western Blot (Recombinant protein) Antibody Production Protein Array
Notes	Best use within three months from the date of receipt of this protein.
Storage	Store at -80 centigrade. Aliquot to avoid repeated freezing and thawing.
Storage Buffer	50 mM Tris-HCl, 10 mM reduced Glutathione, pH=8.0 in the elution buffer.

GENE INFORMATION

Gene Name	GAB3 GRB2 associated binding protein 3 [Homo sapiens (human)]
Official Symbol	GAB3
Synonyms	GAB3; GRB2 associated binding protein 3; GRB2-associated-binding protein 3; DOS/Gab family member 3; GRB2-associated binder 3; Gab3 scaffolding protein; growth factor receptor bound protein 2-associated protein 3; GRB2 Associated Binding Protein 3; Growth Factor Receptor Bound Protein 2-Associated Protein 3; Gab3 Scaffolding Protein; GRB2-Associated Binder 3; DOS/Gab Family Member 3
Gene ID	139716
mRNA Refseq	NM_001081573

 Tel: 1-631-559-9269 1-516-512-3133

 Email: info@creative-biomart.com  Fax: 1-631-938-8127

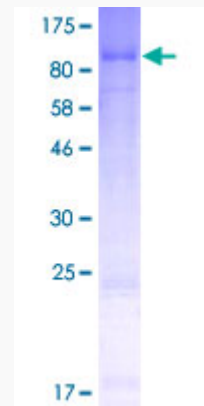
 45-1 Ramsey Road, Shirley, NY 11967, USA

Protein Refseq NP_001075042

MIM 300482

UniProt ID Q8WWW8

**Quality Control
Testing**



12.5% SDS-PAGE Stained with Coomassie Blue.

 Tel: 1-631-559-9269 1-516-512-3133

 Email: info@creative-biomart.com  Fax: 1-631-938-8127

 45-1 Ramsey Road, Shirley, NY 11967, USA