

## Recombinant Human GABARAP protein, His-tagged

Cat. No. GABARAP-363H Lot. No. (See product label)

### SPECIFICATION

|                         |  |
|-------------------------|--|
| <b>Product Overview</b> | Recombinant Human GABARAP protein(O95166)(1-116aa), fused with C-terminal His tag, was expressed in Yeast.   |
| <b>Species</b>          | Human  |
| <b>Source</b>           | Yeast  |
| <b>ProteinLength</b>    | 1-116aa  |
| <b>Form</b>             | If the delivery form is liquid, the default storage buffer is Tris/PBS-based buffer, 5%-50% glycerol. If the delivery form is lyophilized powder, the buffer before lyophilization is Tris/PBS-based buffer, 6% Trehalose, pH 8.0.   |
| <b>Molecular Mass</b>   | 15.3 kDa   |
| <b>Purity</b>           | Greater than 90% as determined by SDS-PAGE.  |
| <b>Storage</b>          | Store at -20°C/-80°C upon receipt, aliquoting is necessary for mutiple use. Avoid repeated freeze-thaw cycles.   |
| <b>Reconstitution</b>   | We recommend that this vial be briefly centrifuged prior to opening to bring the contents to the bottom. Please reconstitute protein in deionized sterile water to a concentration of 0.1-1.0 mg/mL. We recommend to add 5-50% of glycerol (final concentration) and aliquot for long-term storage at -20°C/-80°C. |

 Tel: 1-631-559-9269 1-516-512-3133

 Email: [info@creative-biomart.com](mailto:info@creative-biomart.com)  Fax: 1-631-938-8127

 45-1 Ramsey Road, Shirley, NY 11967, USA



**AA Sequence** MKFVYKEEHPFEKRRSEGEKIRKKYPDRVPVIVEKAPKARIGDLDKKKYLVPDLTV  
GQFYFLIRKRIHLRAEDALFFFVNNVIPPTSATMGQLYQEHHEEDFFLYIAYSDES  
VY  
G

## GENE INFORMATION

**Gene Name** GABARAP GABA(A) receptor-associated protein [ Homo sapiens ]

**Official Symbol** GABARAP

**Synonyms** GABARAP; GABA(A) receptor-associated protein; gamma-aminobutyric acid receptor-associated protein; ATG8A; MM46; GABARAP- $\alpha$ ; FLJ25768; MGC120154; MGC120155;

**Gene ID** 11337

**mRNA Refseq** NM\_007278

**Protein Refseq** NP\_009209

**MIM** 605125

**UniProt ID** O95166

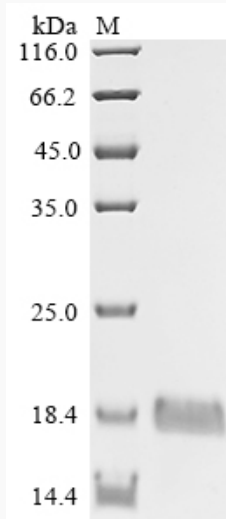
 Tel: 1-631-559-9269 1-516-512-3133

 Email: [info@creative-biomart.com](mailto:info@creative-biomart.com)  Fax: 1-631-938-8127

 45-1 Ramsey Road, Shirley, NY 11967, USA



SDS-PAGE



Tel: 1-631-559-9269 1-516-512-3133

Email: [info@creative-biomart.com](mailto:info@creative-biomart.com) Fax: 1-631-938-8127

45-1 Ramsey Road, Shirley, NY 11967, USA