

Recombinant Human GABARAPL1 Protein (Met1-Lys117), N-His tagged

Cat. No. GABARAPL1-3633H Lot. No. (See product label)

SPECIFICATION

Product Overview	Recombinant human GABARAPL1 (Met1-Lys117) protein fused with the N-terminal His tag was expressed in E. coli.
Species	Human
Source	E.coli
ProteinLength	Met1-Lys117
Molecular Mass	12.87 kDa
Purity	>90 % as determined by SDS-PAGE.
Notes	For research use only.
Storage	Use a manual defrost freezer and avoid repeated freeze thaw cycles. Store at 2 to 8 centigrade for one week. Store at -20 to -80 centigrade for twelve months from the date of receipt.
Storage Buffer	Supplied as solution form in PBS or lyophilized from PBS.
Reconstitution	Reconstitute in sterile water for a stock solution.
Shipping	In general, proteins are provided as lyophilized powder/frozen liquid. They are

 Tel: 1-631-559-9269 1-516-512-3133

 Email: info@creative-biomart.com  Fax: 1-631-938-8127

 45-1 Ramsey Road, Shirley, NY 11967, USA

shipped out with dry ice/blue ice unless customers require otherwise.

GENE INFORMATION

Gene Name [GABARAPL1 GABA \(A\) receptor-associated protein like 1 \[Homo sapiens \(human\) \]](#)

Official Symbol [GABARAPL1](#)

Synonyms GABARAPL1; GABA (A) receptor-associated protein like 1; gamma-aminobutyric acid receptor-associated protein-like 1; APG8L; ATG8B; ATG8L; gec1; GEC-1; GABARAPL1-a; early estrogen-regulated protein; glandular epithelial cell protein 1; GABA (A) receptor-associated protein-like 1; ATG8; GEC1; APG8-LIKE;

Gene ID [23710](#)

mRNA Refseq [NM_031412](#)

Protein Refseq [NP_113600](#)

MIM [607420](#)

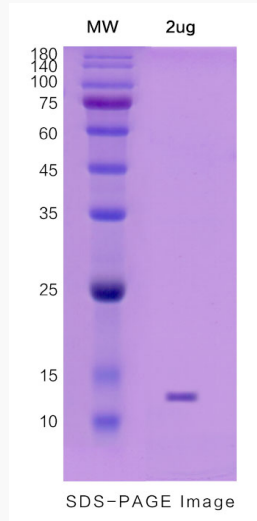
UniProt ID [Q9H0R8](#)

 Tel: 1-631-559-9269 1-516-512-3133

 Email: info@creative-biomart.com  Fax: 1-631-938-8127

 45-1 Ramsey Road, Shirley, NY 11967, USA

SDS-PAGE



 Tel: 1-631-559-9269 1-516-512-3133

 Email: info@creative-biomart.com  Fax: 1-631-938-8127

 45-1 Ramsey Road, Shirley, NY 11967, USA